

#### WHAT YOU NEED:

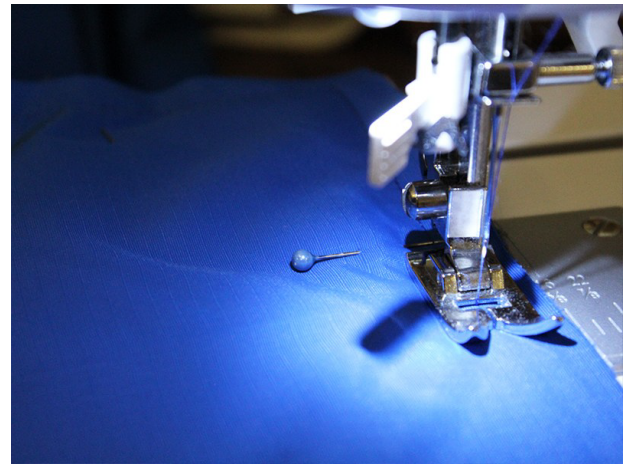
- 1.8m Ripstop Fabric
- 1.8m Fleece Print
- 7m 5/8" Bias Binding
- 2.5m 1" webbing / belting
- 4 1" D rings



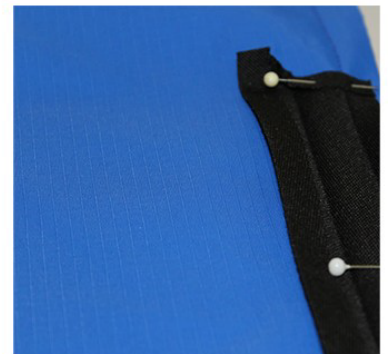
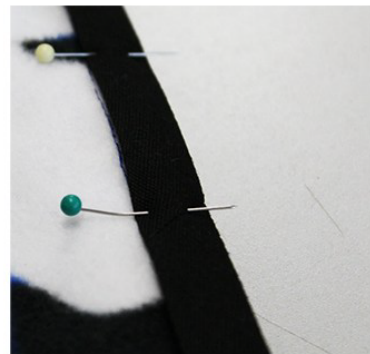
# WATERPROOF PICNIC BLANKET

#### WHAT YOU DO:

1. Remove selvedge from the ripstop and cut one 180cm x 145cm (72" x 58") piece
2. Lay the ripstop fabric on top of the fleece print, wrong sides together making sure both fabrics lie flat.
3. Pin the ripstop and fleece together around all edges and trim fleece to size.



4. Baste around the blanket approximately 1cm (1/2") from the edge.



5. Starting in the middle of one ripstop side, unfold the bias binding and with right side of the binding to the right side of the blanket pin .5cm (1/4") away from the edge around entire blanket folding bias at corners and stitch in place along the first fold line. Fold the bias binding over to the fleece side, lay flat, pin and where the end of your binding meets the beginning of the binding fold back .5cm (1/4") to hide raw edge. Stitch in place.



To make the harness, cut 2 pieces of the webbing 90cm (36") long.

6a. Insert 1 piece of webbing into 2 D rings, fold back 1cm (1/2") and then 3cm (1") and stitch on edge of folded webbing. Repeat for 2nd strap. On the other end of the straps either seal with fray block or stitch across the webbing a couple of times to prevent the webbing from fraying.

6b. Cut 1 piece of webbing approximately 45cm (18") long for the carry strap. Arrange the two long pieces of webbing with the D rings on a table approximately 20cm (8") apart. Fold raw edges of under 1cm (1/2") of the carry strap and place 20cm (8") from the D rings across the 2 long straps. Pin and stitch carry strap in place.