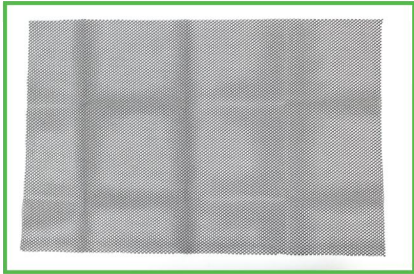
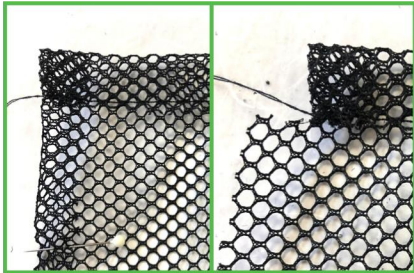


# DIY MESH BAG



## STEP 1

Cut a 60cm x 40cm rectangle of mesh. Increase or decrease the size based on desired size of bag.



## STEP 2

Fold both side edges in 1cm and pin. Fold the top edge 2cm and stitch 1.5cm from the fold to make a casing for the cord. Clip side edges just below casing.



## STEP 3

Fold rectangle in half wrong sides together and stitch 0.5cm along side and bottom.



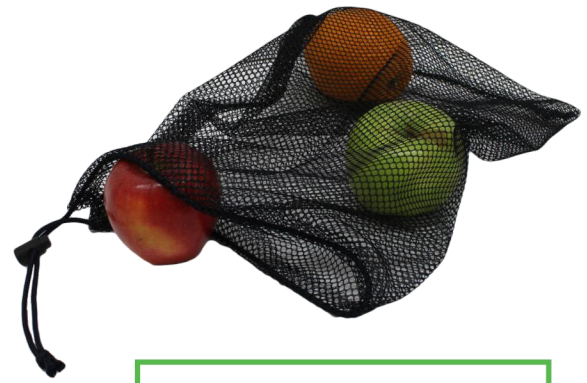
## STEP 4

Turn right side in and hand press the seam. Stitch 0.5cm along side and bottom to make a french seam.



## STEP 5

Turn right side out. Cut 55cm - 60cm of cord. Attach a safety pin to the end of your cord and pull through casing.



## Supplies

- Mesh Fabric
- Nylon Cord
- Cord Stop
- Needle and Thread
- Safety Pin

**Note:** For best results, use a sewing machine.



## STEP 6

Add cord stop and secure the ends with a knot.

**Tip:** Heat the ends of the cord with a lighter to stop fraying. **DO NOT** try this with cotton cord.