

# HOLIDAY GLAMOUR MASK DIY

## MATERIALS

0.2m of main fabric  
0.2m of lining fabric  
0.2m of fusible interfacing  
0.4m of ¼" elastic

## OPTIONAL

0.2m of additional overlay fabric for embellishment

Seam allowance = 1/4" (0.6cm)



## WHAT TO DO

### STEP 1

With right sides together, cut 2 pattern pieces of each main fabric, lining fabric and interfacing.

### STEP 2

Fuse interfacing to wrong side of lining pieces. Pin lining pieces together along center curved edge and stitch. Press seam open.

### STEP 3 IF USING OVERLAY

Cut 2 pieces of overlay fabric and stitch together along center curved edge. Press seam open. Layer the overlay fabric on top of main fabric matching seams and baste together.

**NOTE:** If using beads, studs or other embellishment notions, add to main piece before next step.

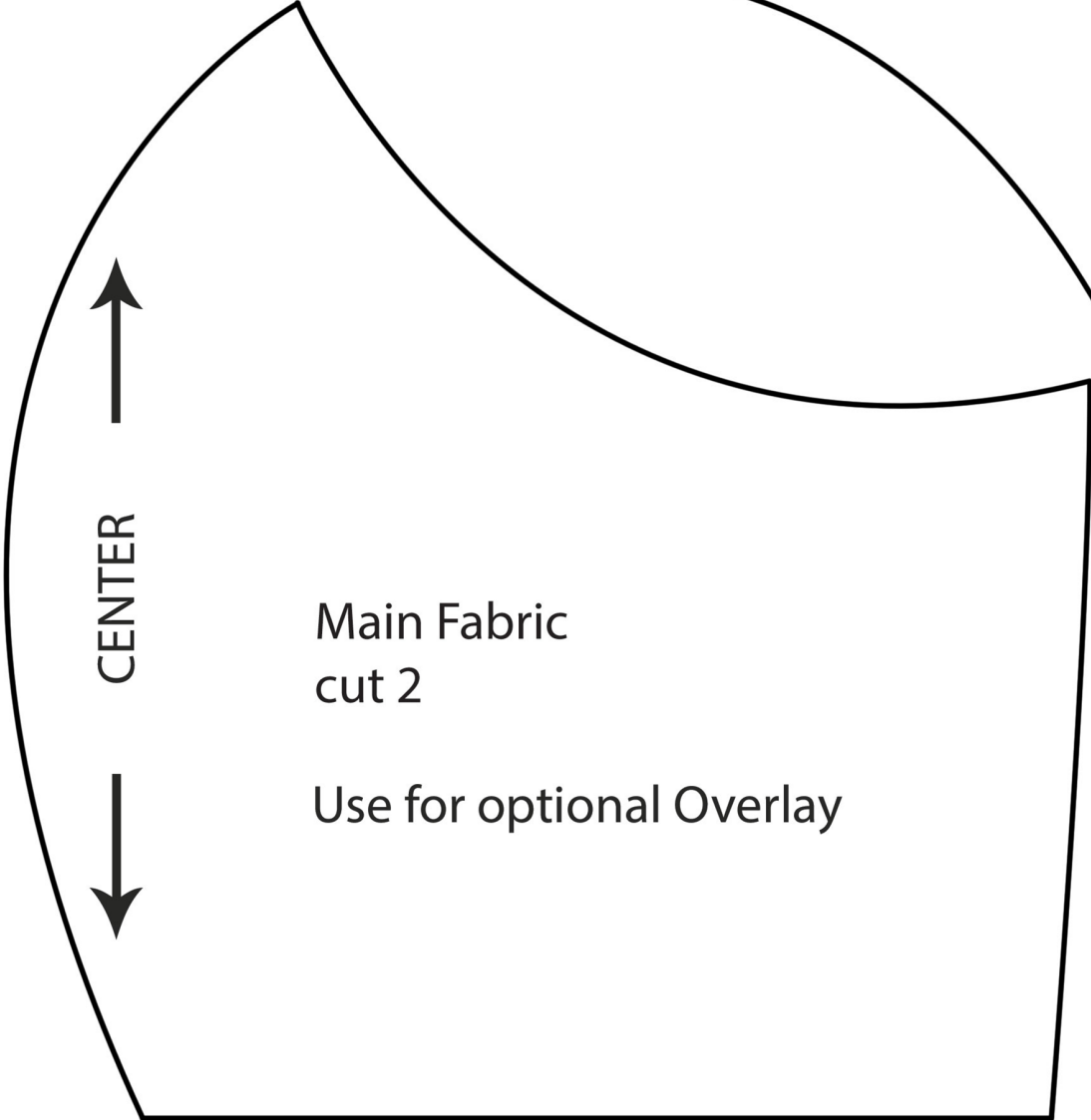
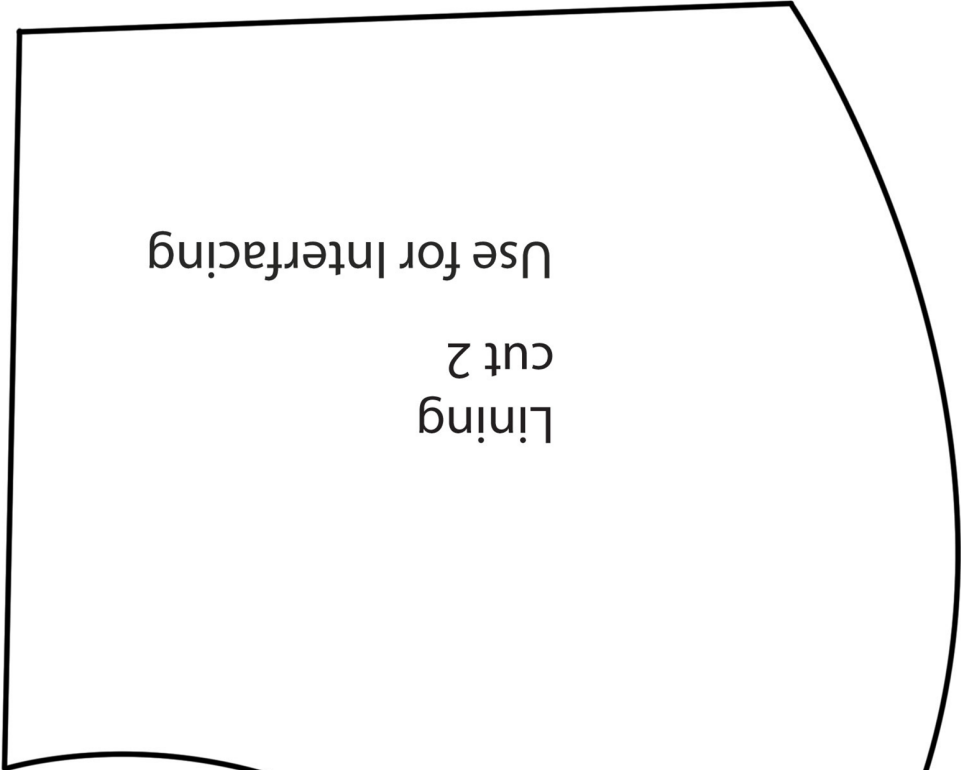
### STEP 4

Cut the elastic into two 13-16cm pieces and pin to side corners of main fabric creating a loop. Pin the main and lining fabric pieces right sides together with the elastic in between.

### STEP 5

Sew around the entire mask leaving a 3" (7cm) opening along the bottom. Turn right side out and press. Top stitch along the edge of the entire mask.

HOLIDAY GLAMOUR  
MASKS DIY PATTERN



CENTER



Main Fabric  
cut 2

Use for optional Overlay