



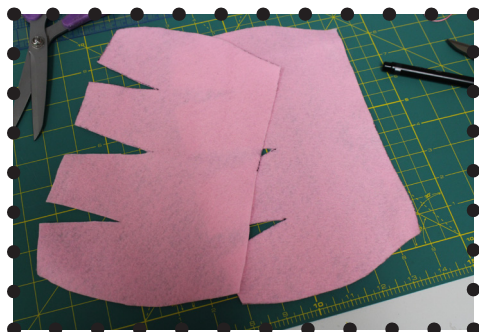
heart gnome



What you need:

- ♥ Glue Gun & Sticks
- ♥ Pencil, Scissors & Ruler
- ♥ Sewing Machine & Thread

- ♥ Embroidery Thread (Red & Pink)
- ♥ Pins & Sewing Needle
- ♥ Lightweight Felt (White, Pink, Beige & Red)
- ♥ Exacto Knife



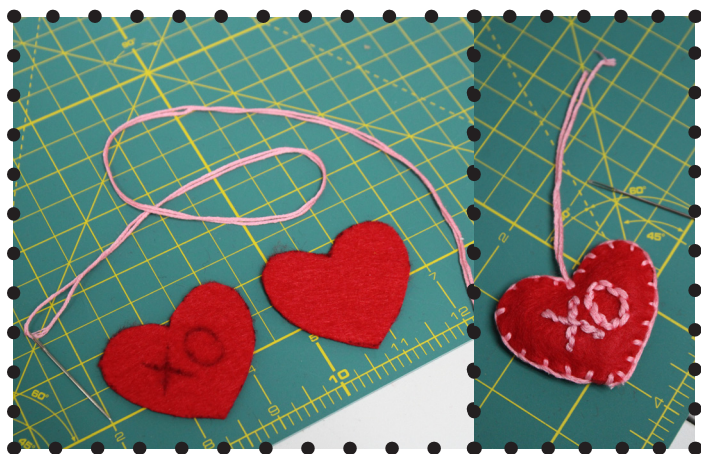
Step 1: Cut out two Body patterns out of Pink Lightweight Felt. (See Gnome Body pattern)



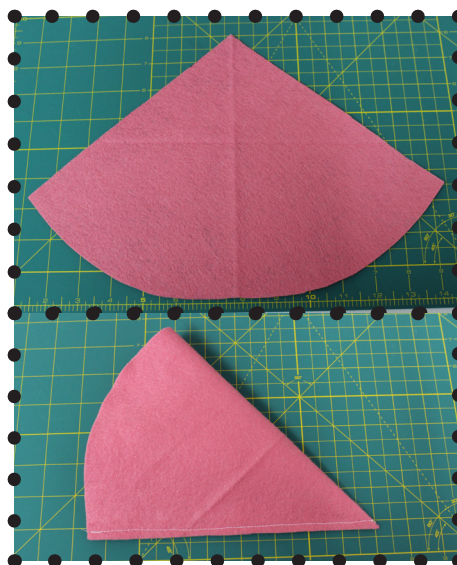
Step 2: Sew side seams together and darts at 1/4" (0.6cm).



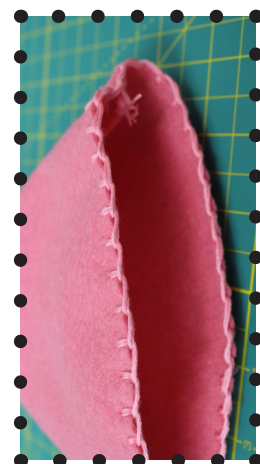
Step 3: Cut out Bottom from White Lightweight Felt and sew to the bottom of the Gnome Body at 1/4" (0.6cm). Flip inside-out and stuff body with scrap materials. (See Gnome Bottom pattern)



Step 4: Cut out two Hearts from Red Lightweight Felt. Stuff with scrap felt and blanket stitch together with Pink Embroidery Thread, leaving a 'tail' of thread at the top.
Optional: Embroider 'XO' onto the Heart with Pink Embroidery Thread.
(See Hat Heart pattern)



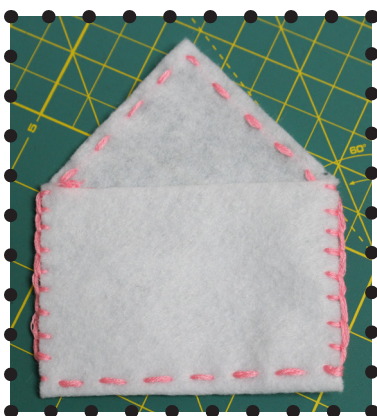
Step 5: Cut out one Hat from Pink Lightweight Felt. Fold in half and sew at 1/4" (0.6cm).
(See Gnome Hat pattern)



Step 6: Flip hat inside-out and blanket stitch along the open edge with Pink Embroidery Thread.



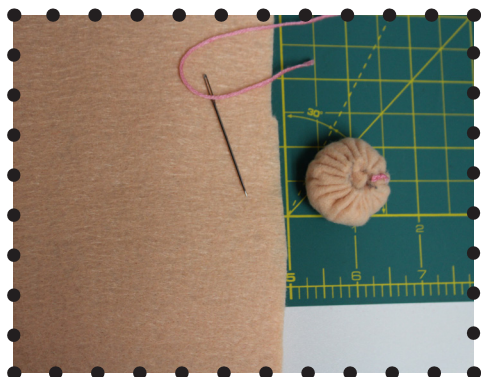
Step 7: Cut out one Envelope from White Lightweight Felt. (See Envelope pattern)



Step 8: Fold and blanket stitch sides together with Pink Embroidery Thread, straight stitch the bottom and top edge.



Step 9: Cut out Heart from Red Lightweight Felt. Glue down to close the Envelope. (See Envelope Heart pattern)



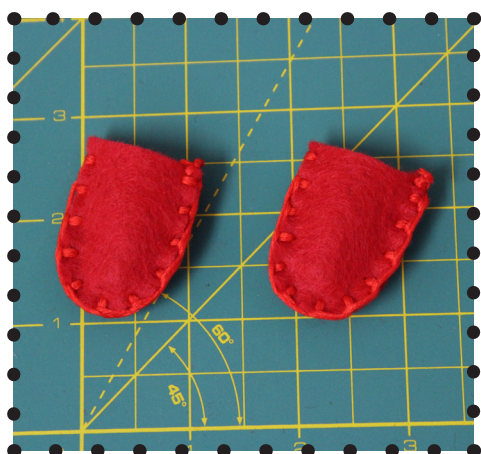
Step 10: Cut out one Gnome Nose with Beige Lightweight Felt. Stuff with scrap felt and sew closed. (See Gnome Nose pattern)



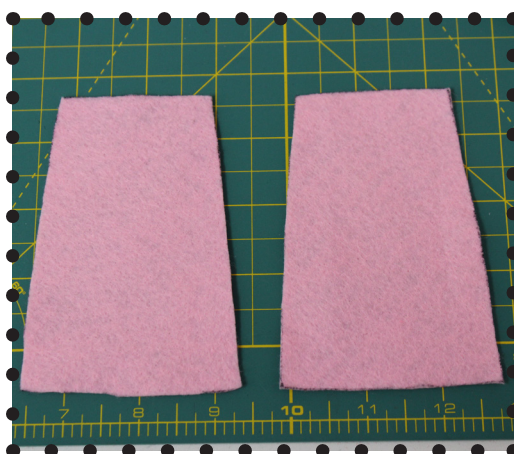
Step 11: Using an exacto knife, cut out Beard from White Faux Fur using the template provided. (See Beard Template pattern)



Step 12: Cut out four Hands from Red Lightweight Felt. (See Gnome Hand pattern)



Step 13: Blanket stitch together in pairs with Red Embroidery Thread.



Step 14: Cut out two Arms from Pink Lightweight Felt. (See Gnome Arm pattern)



Step 15: Fold and blanket stitch sides together with Pink Embroidery Thread. Attach hand with straight stitch and stuff with scrap materials.



Step 16: Attach the Arms, Nose and Beard with Pink Embroidery Thread to the top edge.



Step 17: Using Hot Glue, attach the Beard to the Body. Be careful not to get glue on the front of your beard!



Step 18: Stuff Hat with scrap materials and fold up hat rim. (See Gnome Hat pattern.) Attach Hat to the top opening with Hot Glue.



Step 19: Attach Hat Heart to the point of the Hat using the 'tail' of thread.

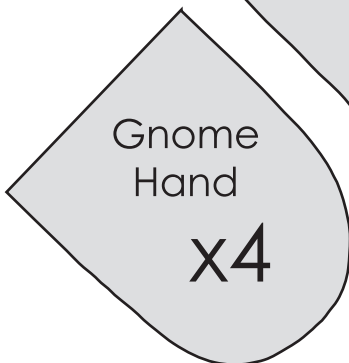
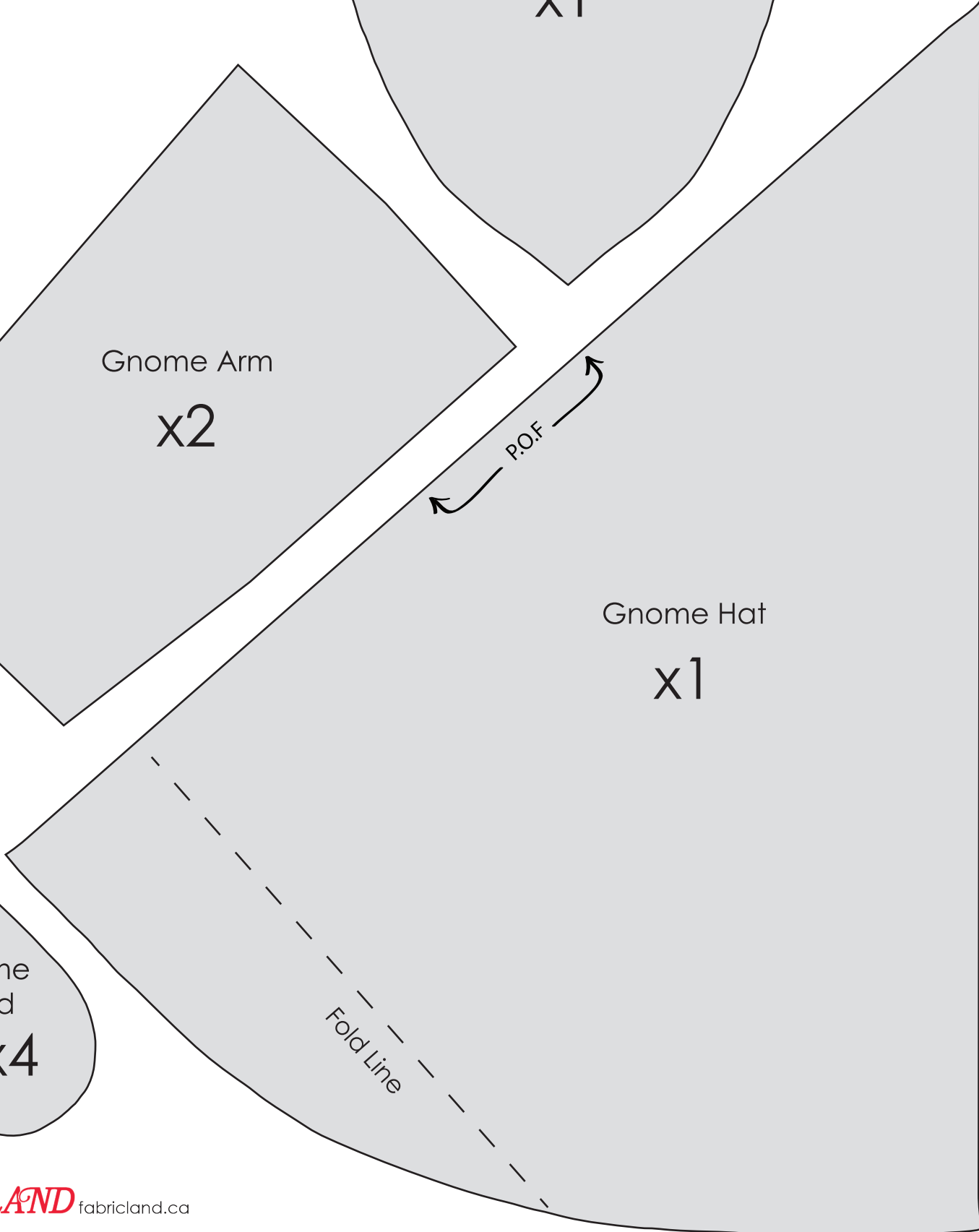
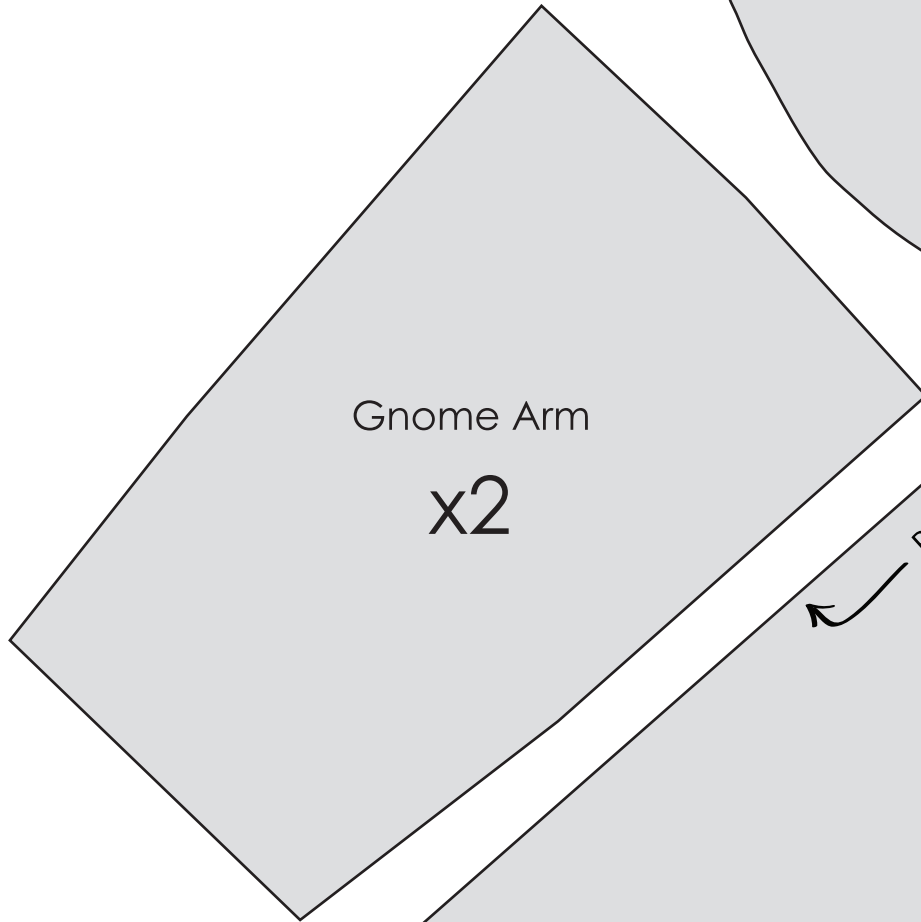
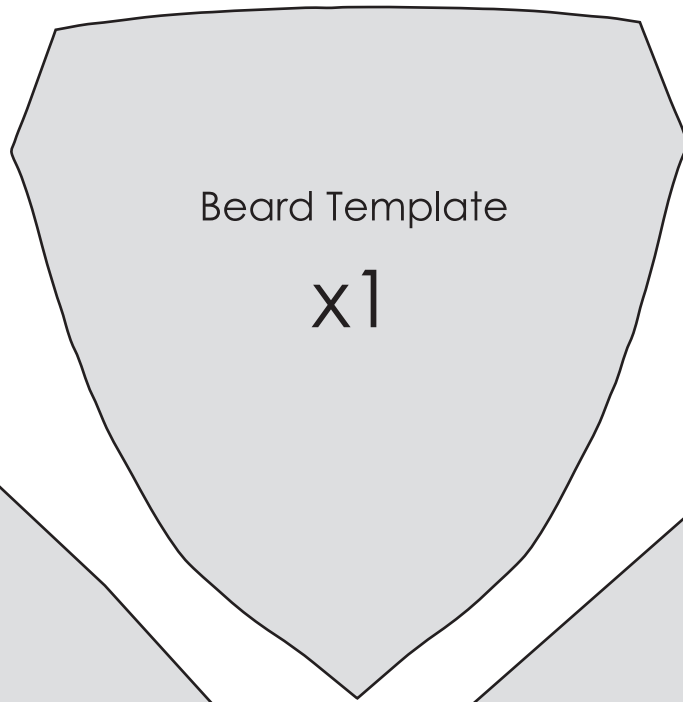


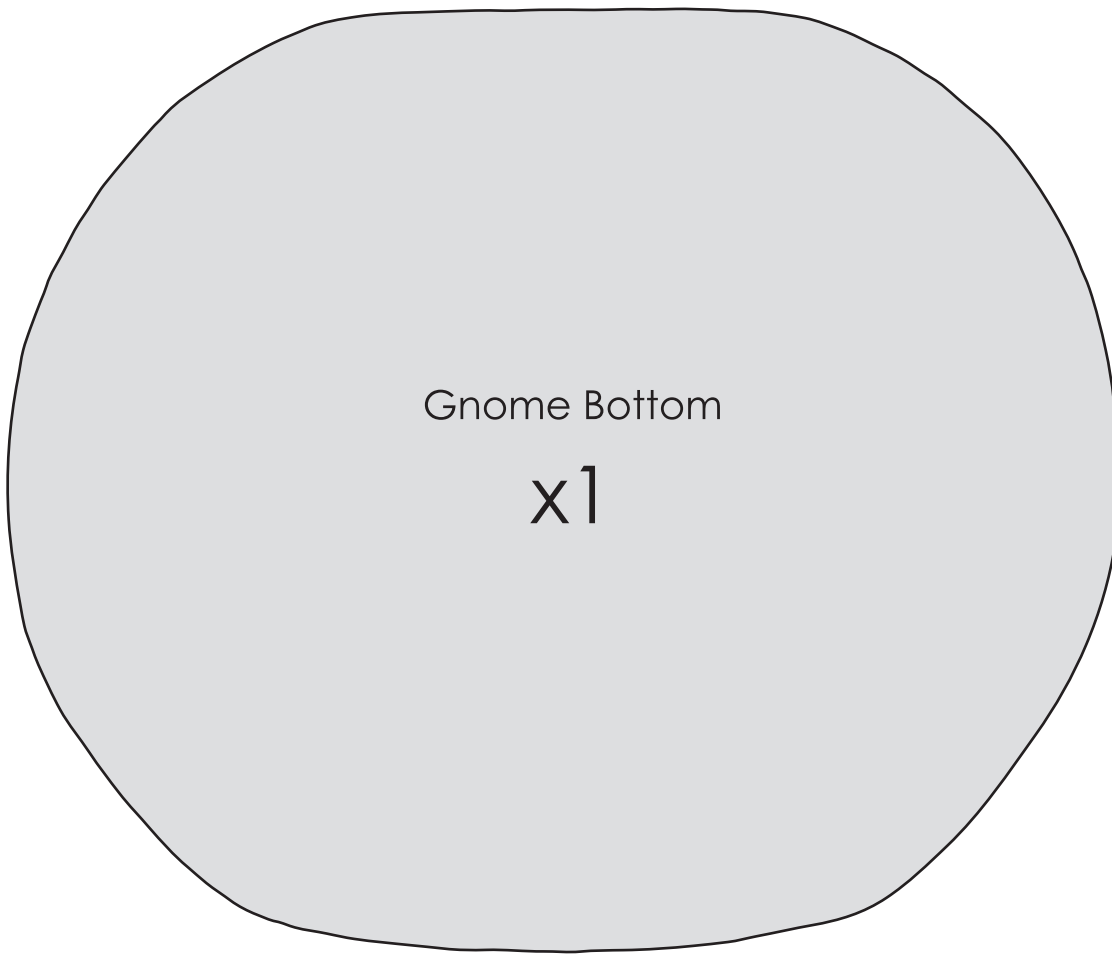
Step 20: Hot Glue the Envelope to the underside of the Arm.


 HAPPY
VALENTINE'S
DAY!



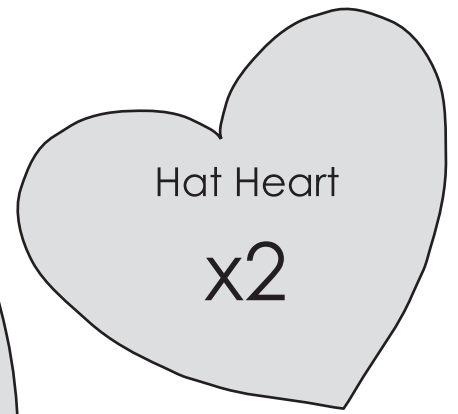
heart gnome





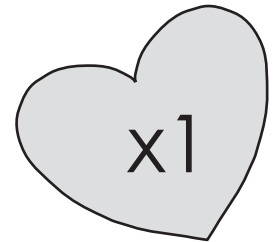
Gnome Bottom

x1



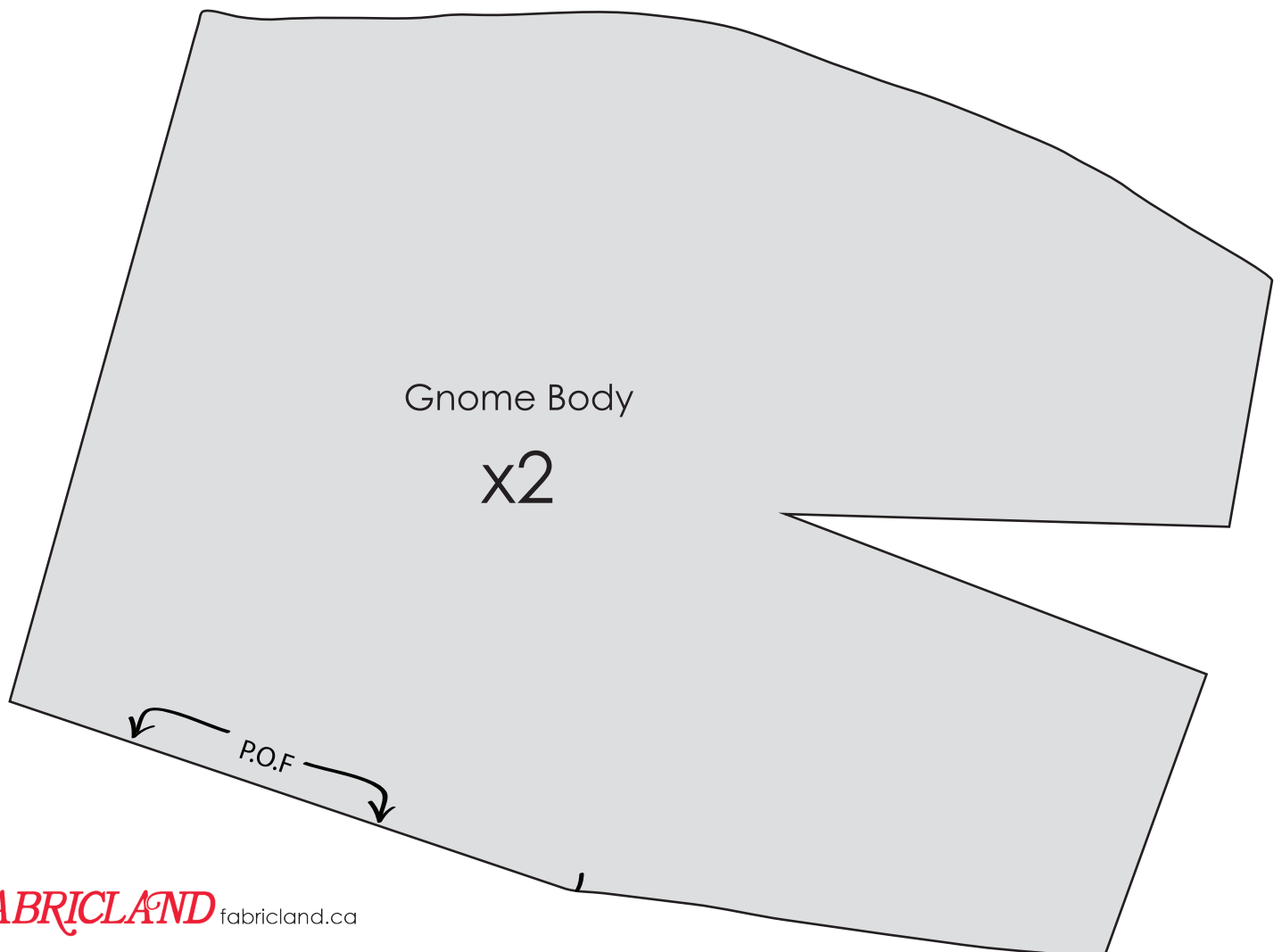
Hat Heart

x2



x1

Envelope Heart

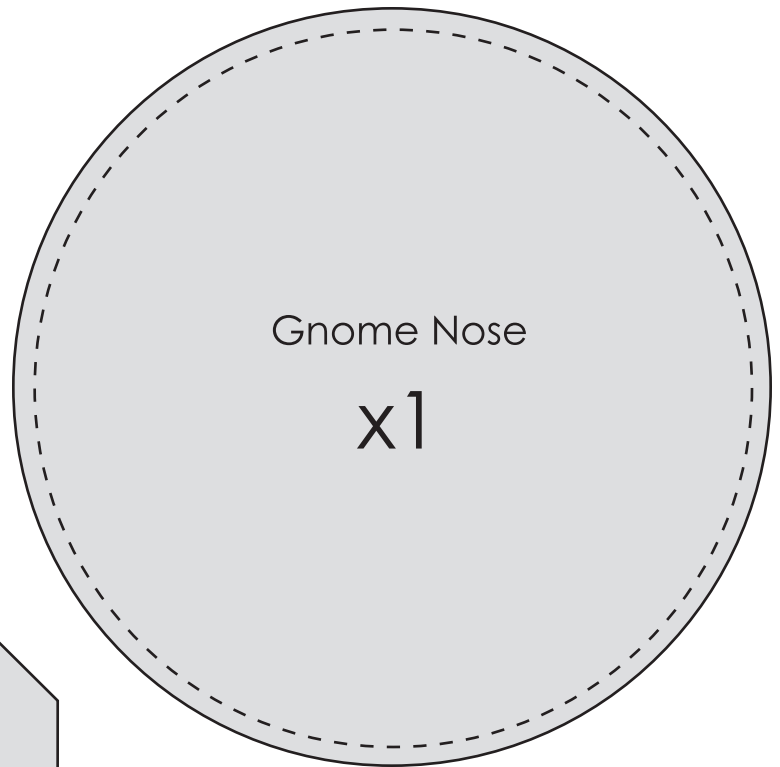


Gnome Body

x2

P.O.F

Gather stitch and pull to
completely enclose



Gnome Nose

x1

Envelope

x1

Note: P.O.F - Place On Fold
Fold material in half, and place P.O.F end
on the fold before cutting.