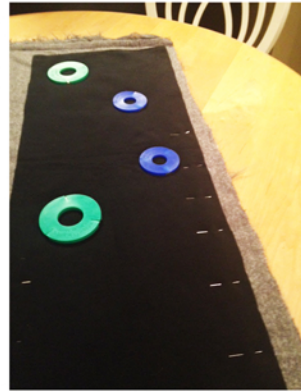


MAKE YOUR OWN INFINITY SCARF



WHAT YOU NEED:
35cm x 150cm fur
35cm x 150cm fleece
or preferred backing
fabric

Cut and straighten
edges of the fleece to
measure 30x150cm
(12x60")

Trim selvedge

Lay fleece on the
back side of the
fur and pin all
around

Cut fur fabric to the
same size as the
fleece fabric.
When cutting the fur
try to cut the
backing only and
not the fur pile

Remove pins, separate fur and
fleece and stitch 1cm along
the edges of the fur piece
pushing the fur towards the
center of the fabric. This will
make it easier to join and stitch the
fleece and fur together



With right sides
together, pin along
both lengths

Stitch 1cm from
the edge on each
side. Turn inside
out

Fold in half and match both ends of the
fur RIGHT sides together, pinning
along as far as possible.
Stitch 1cm along where pinned

Lay flat, fold
opening edges of the
fleece to the inside
and machine
stitch closed

AS SEEN ON THE RUNWAYS - FUR/PRINT SCARF



WHAT YOU NEED:
30cm x 150cm fur
30cm x 150cm
printed fabric

Cut 2 pieces of
the print fabric
25x75cm
(10x30")

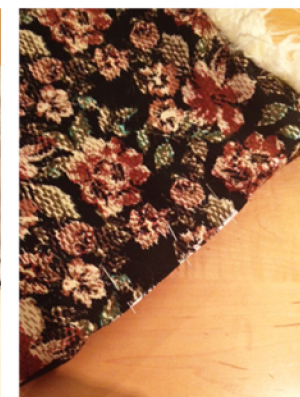
Stitch the 2 pieces
together using a 1cm
seam leaving an
opening in the center
as shown

Fold stitched pieces
in half lengthwise
and mark a curved
line on the cut edge
as shown

Cut along marked
line through all
the layers to create a
curve on both ends

Place the print fabric
on the **WRONG** side of
the fur, pin and cut fur
fabric to the same size
as the print fabric.
When cutting the fur
try to cut the backing
only and not the
fur pile.

Remove pins.
Stitch 1cm around
fur edges pushing
the fur lengths
towards the center
of the fabric
(*see NOTE below)



Place **RIGHT** side of the fur and
print together and pin

Stitch around the entire scarf 1cm
from the edge

Insert your hand into
the opening on the print
side and turn **RIGHT**
sides out

Hand stitch opening
closed

NOTE* this will make it easier to join and stitch the fur and print fabric together