



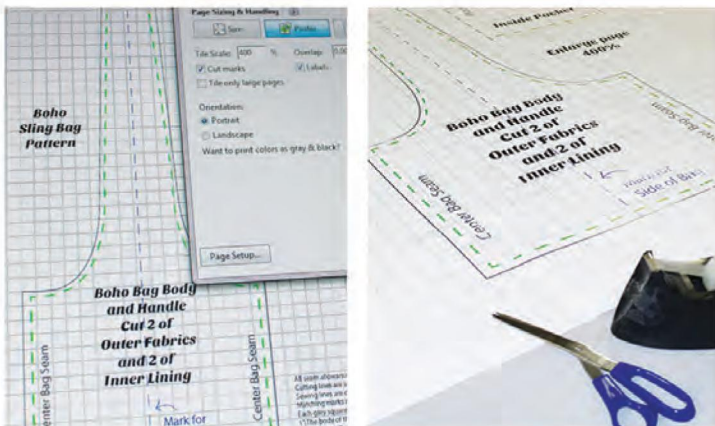
## WHAT YOU NEED:

- 0.5M EACH OF 2 COORDINATING COTTON PRINTS FOR BAG AND LINING (2M TOTAL) \*IF YOU WOULD LIKE A DIFFERENT PATTERN FOR BAG BOTTOMS AND POCKET, ADD ANOTHER 0.25M
- 0.25M FELT OR TERRY CLOTH FOR BASE
- SEWING MACHINE
- SCISSORS
- PINS AND THREAD
- IRON

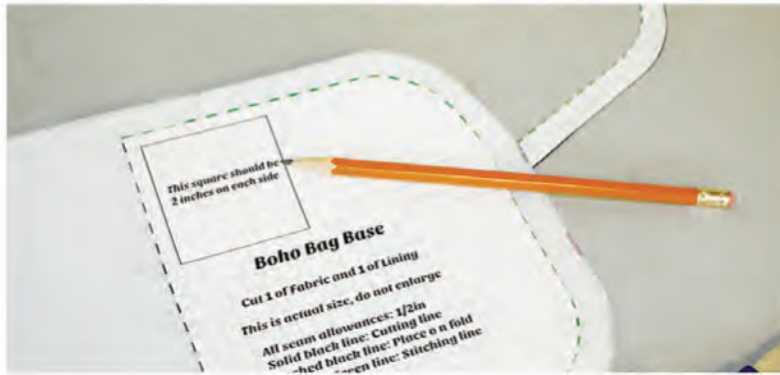


1. FIRST CLICK HERE TO DOWNLOAD THE PATTERN
2. CUT 4 PIECES OF BAG BODY/HANDLE AND 1 PIECE OF INNER POCKET IN THE FABRIC OF YOUR CHOICE.

3. CUT 1 EACH OF MAIN FABRIC AND LINING FOR BAG BOTTOM.



4. USING CUT PIECES AS THE PATTERN, CUT 1 PIECE FROM THE FELT OR TERRY CLOTH FOR THE BOTTOM RE-INFORCEMENT. NOW TAKE YOUR PAPER TEMPLATE AND CUT OFF THE SEAM ALLOWANCE. PLACE ON TOP OF THE FELT AND MARK THIS AREA. SEW BOTTOM LINING PIECE FACE OUT TO THE FELT, 1/2 WAY BETWEEN THE SEAM ALLOWANCE AND THE OUTER EDGE. SET ASIDE.



5. FOR THE POCKET, CUT OUT POCKET ALONG FOLD LINE AND SEW RIGHT SIDES TOGETHER ALONG THE TWO SHORTER SIDES LIKE IN THE PHOTO BELOW, USING A 1/2" SEAM ALLOWANCE.



6. CLIP CORNERS



7. TURN POCKET RIGHT SIDE OUT AND PRESS. FOLD POCKET IN HALF BRINGING BOTH SEAMS TOGETHER AND IRON TO CREATE A CENTER CREASE. SET ASIDE.



8. FOR THE LINING. TAKE THE TWO LINING PIECES AND PLACE THEM RIGHT SIDES TOGETHER. SEW ALONG ONE SIDE ONLY, USING A 1/2" SEAM ALLOWANCE.



9. PRESS SEAM OPEN AS SHOWN:



10. LAY LINING ON A TABLE, RIGHT SIDES FACING UP. PLACE POCKET 1.5" FROM THE TOP MATCHING SEAM AND CENTER CREASE AND MARK WITH PINS 1/2" FROM THE BOTTOM OF THE POCKET.



11. FLIP POCKET WITH UNFINISHED EDGE FACING UP, 1/2 " ABOVE MARKED PIN LINES AND SEW ACROSS.



12. ONCE SEWN, FLIP POCKET UP, PIN SIDES AND EDGESTITCH THROUGH ALL LAYERS.



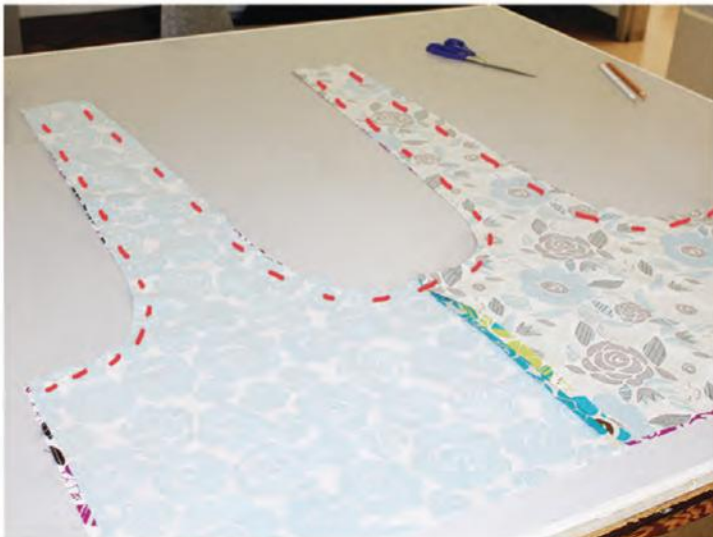
OPTIONAL: TO DIVIDE THE POCKET INTO TWO, MARK THE POCKET WITH MASKING TAPE TO CREATE A STRAIGHT LINE AND SEW.



13. NOW FOR THE MAIN BAG. TAKE THE TWO MAIN PIECES AND PLACE THEM RIGHT SIDES TOGETHER. SEW ALONG ONE SIDE ONLY USING A 1/2" SEAM ALLOWANCE AND PRESS SEAM OPEN.



14. LAYER THE MAIN AND LINING PIECES TOGETHER. PIN AND SEW ALONG RED DOTTED LINES SHOWN.



15. TRIM AND CLIP THE CURVES OF THE BAG. THEN TURN BAG INSIDE OUT AND PRESS.



16. TO SEW THE OTHER SEAM, BRING THE TWO FAR CORNERS OF THE OUTER FABRIC TOGETHER AS SHOWN IN THE IMAGE BELOW. PIN TOGETHER ABOUT 4" ALONG THE UNSEWN SIDE SEAM.



17. CONTINUE PINNING UNTIL THE BAG IS INSIDE OUT AS SHOWN BELOW AND SEW TOGETHER ALONG PINNED EDGE, PRESS SEAM OPEN AND TURN INSIDE OUT.



18. SEW THE LINING BOTTOM/FELT PIECE TO THE BOTTOM EDGE LEAVING A 4" OPENING ON A LONG SECTION.



19. TRIM SEAMS AND CLIP CORNERS.



20. NOW FOR THE TRICKY PART. PULL THE MAIN BAG FABRIC THROUGH THE 4" OPENING TO FLIP INSIDE OUT..



21. PIN AND SEW THE MAIN BAG BOTTOM TO THE MAIN BAG.



22. PUSH THE COMPLETED MAIN BAG BACK THROUGH THE OPENING AND STITCH THE OPENING CLOSED.



23. TURN OUTSIDE IN AND PRESS FOR A REVERSIBLE, STYLISH AND FUN BOHO BAG.

