

Padded Hanger



Padded Hanger

Difficulty Level: Easy

What you need

- 8" (20cm) Fabric (See step 1 for more accurate measurements)
- 10" (25cm) Batting (See step 2 for more accurate measurements)
- Hand Sewing Needle
- Thread
- Scissors / Rotary Cutter
- Hanger (Provided by the Maker)
- Optional: Ribbons and Soft Trims (To Accessorize)

Some examples of what can be hung:

- Coat
- Shirts
- Blouses
- Dresses
- Robes
- Lingerie
- More!

Fabric Recommendations

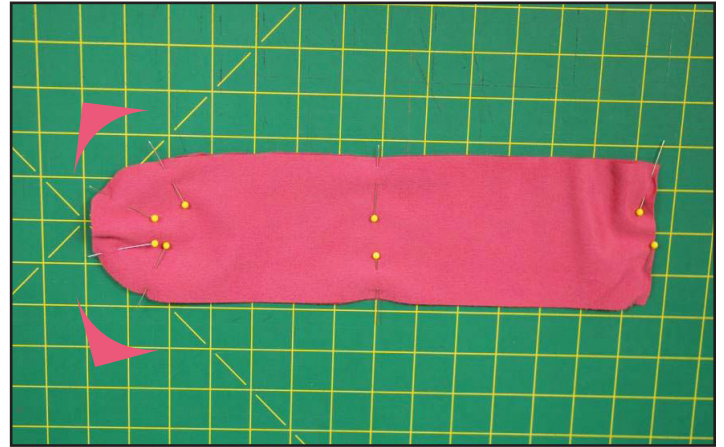
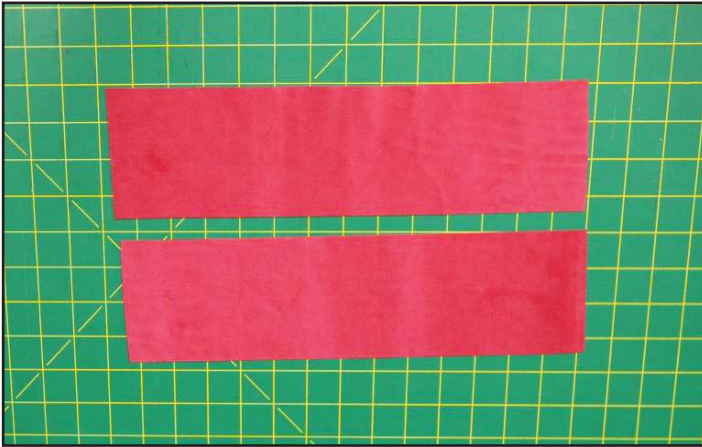
- Satin (used in this example)
- Craft Cotton
- Medium Weight Upholstery Fabric

Tips before you start

- Try sewing on a scrap piece of fabric before sewing your fabric pieces. Adjust your tension, stitch length, and needle type accordingly.
- More fabric may be needed if the fabric has a directional print.
- Keep in mind that the hanger you use may be a slightly different width and height. Follow the formulas on steps 1 and 2 for best results.
- Make sure to use a hanger that looks like the image shown:



Instructions



Step 1: Cut Fabric

Cut out your fabric using the formula below.

The width from the tip of the side to the centre of the hanger is 11" (28cm) (a.). Add 2.5" (7cm) to that measurement to get the width of the fabric pieces.

$$11 + 2.5 = 13.5 \text{ (28cm + 7cm = 35cm)}$$

2.75" (7cm) (b.) is the height of the tallest area of the hanger. Add .75" (2cm) to give you the height measurement of the fabric pieces.

$$2.75 + .75 = 3.5 \text{ (7cm + 2cm = 9cm)}$$

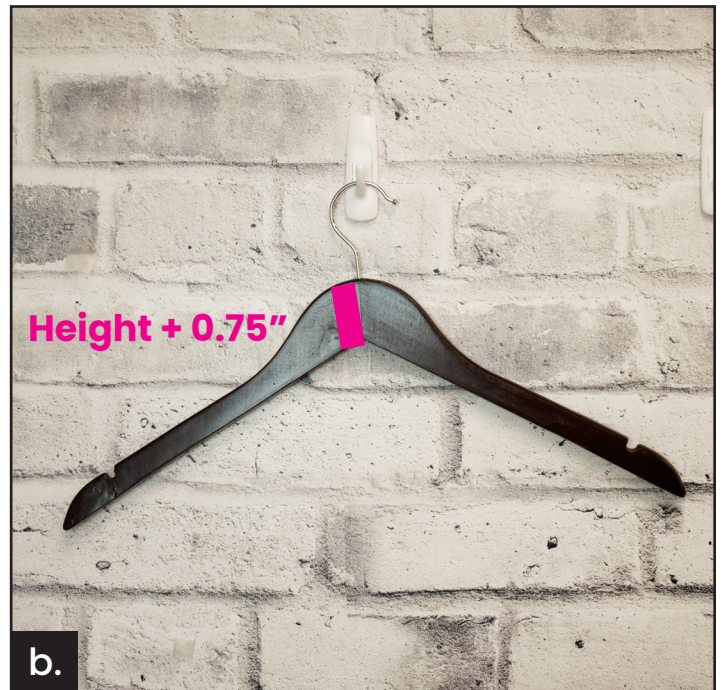
Cut 4 pieces of fabric to those dimensions: Our example is 13.5" x 3.5" (34.5cm x 9cm)

After the four pieces are cut, place the right sides of fabric together so you have a set of pieces for each side of the hanger. Cut the corners off of one side of each piece to round it out. Pin the pieces in together.

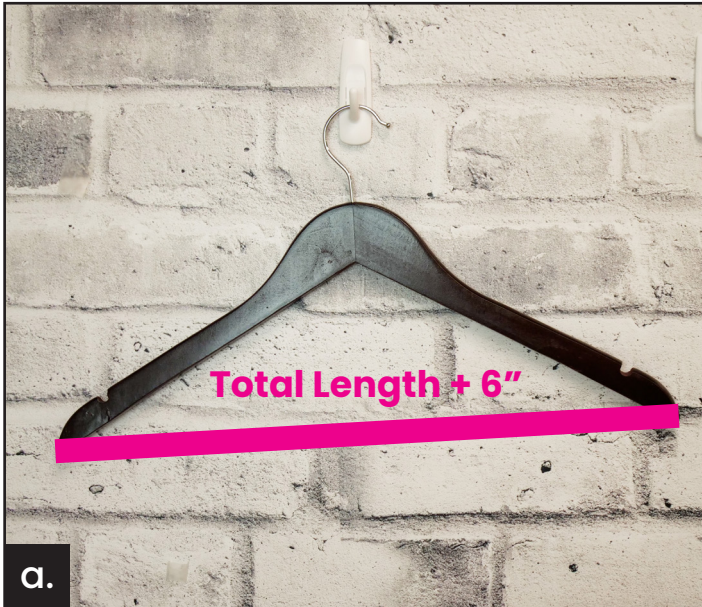
Width



Height



Total Width



Total Height



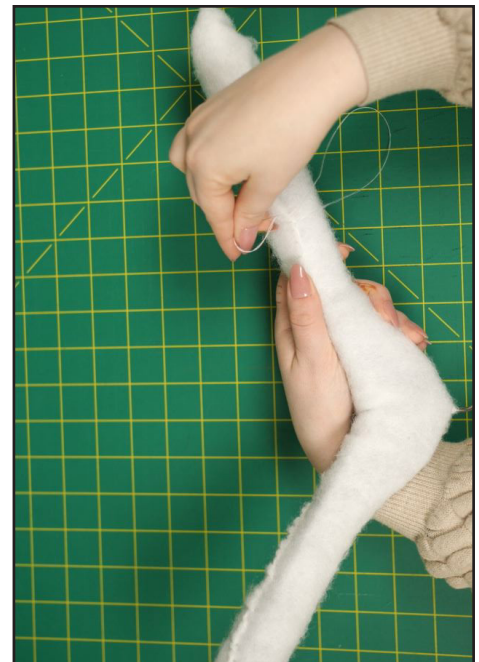
Step 2: Cut batting

Calculate the amount of batting needed by roughly adding 6" (15.25cm) to the total width (a.) of the hanger and multiply by 2 for the total height (b.).

Batting Width is: $17.5 + 6 = 23.5"$ ($44.5\text{cm} + 15.25\text{cm} = 60\text{cm}$)

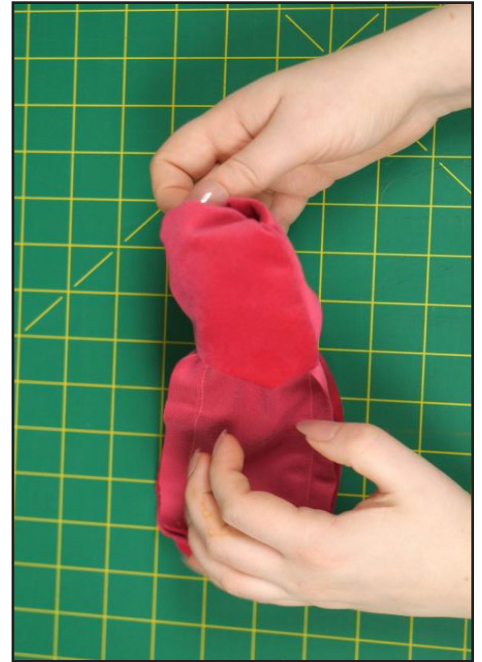
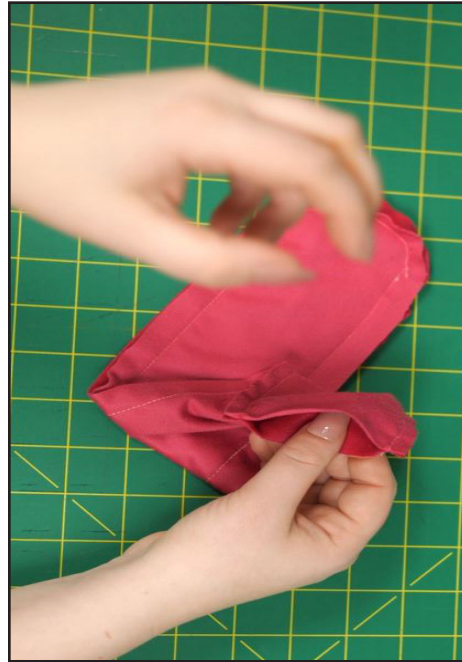
Batting Height is: $6 \times 2 = 12"$ ($15.25\text{cm} \times 2 = 30.5\text{cm}$)

Cut the batting to those measurements: Our example is 12" x 23.5" (30.5cm 60cm)



Step 3: Attach the Batting to the Hanger

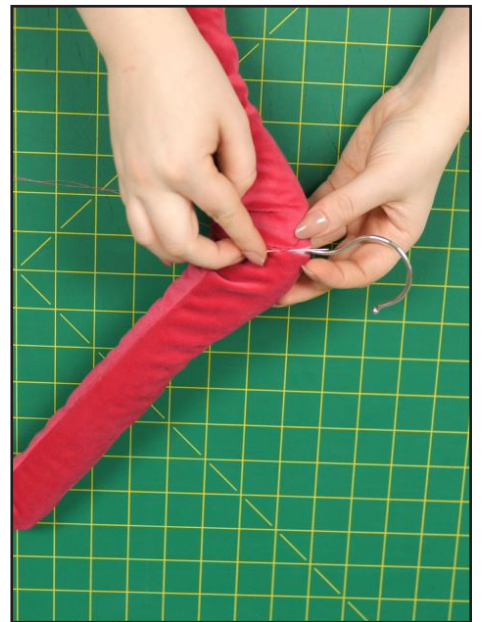
Fold the batting around the hanger. Fold the edges of the batting inwards around the hanger. Tighten and overlap, then pin the edges together. Hand sew the edges of the batting together to make the batting seamless. Try to make the thickness of the batting covering the hanger as even as possible.



Step 4: Sew the Fabric Pairs

Hand or machine stitch the fabric pairs with right sides together, leaving the straight short edge open. Then, turn the pieces inside out.

Note: If there are areas of the hanger that are thicker or thinner than others, you may need to create a larger or smaller seam allowance to accommodate.



Step 5: Add the Fabric Pieces to the Hanger

Slide the batting covered hanger inside of each piece. Fold the edges of the fabric inward so the folded edges of the pieces touch. Hand stitch the edges together.

Step 6: Customize with Notions (Optional)

Soft ribbon and trims can be hand sewn or tied over the fabric for a cohesive look.



Project Complete

Enjoy your newest creation! You can stylishly hang coats, shirts, blouses, dresses, robes, lingerie and more!

©Fabricland 2025.

Every effort has been made to ensure that all projects are error free. As we have no control over the execution of instructions no warranty can be given, nor results guaranteed. This pattern is not available for commercial resale. You cannot copy and sell this pattern. You may sell items you make with this pattern.