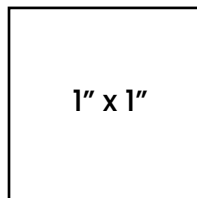
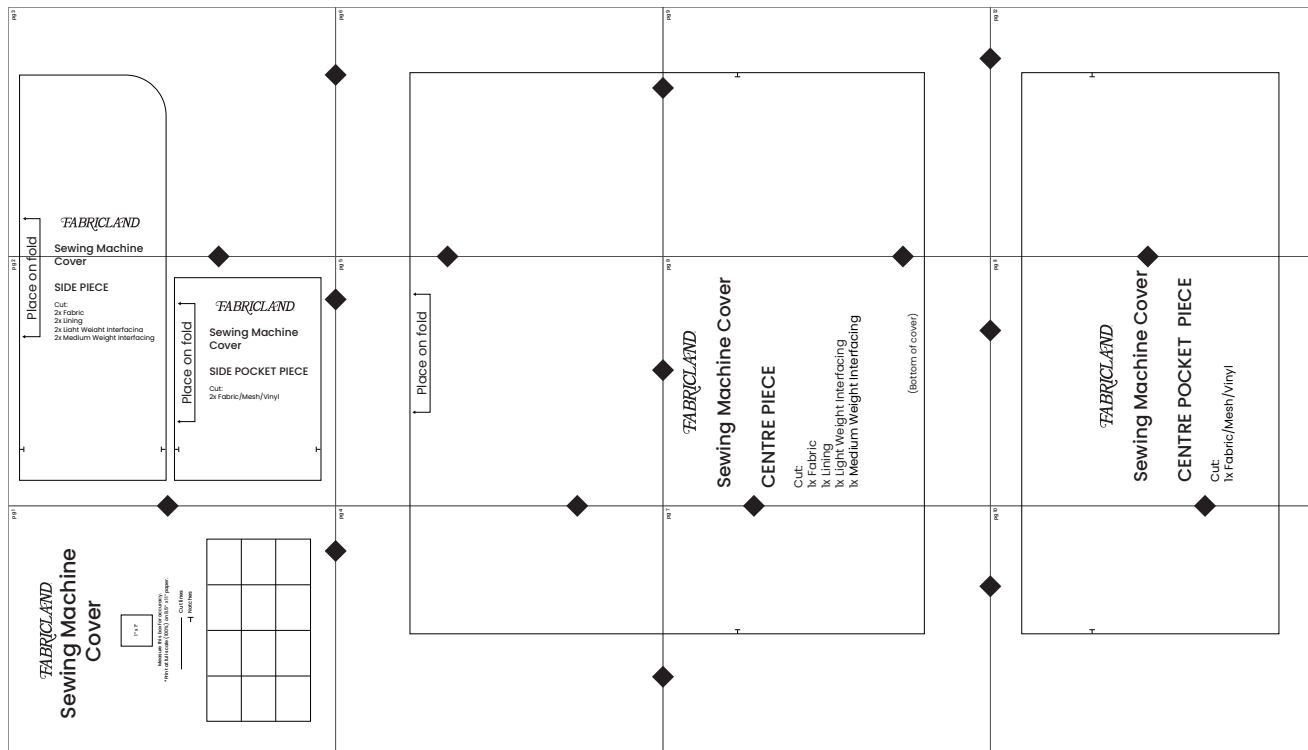


FABRICLAND[®]

Sewing Machine Cover



Measure this box for accuracy.
 *Print at full scale (100%) on 8.5" x 11" paper.



Cover

SIDE PIECE

- Cut:
- 2x Fabric
 - 2x Lining
 - 2x Light Weight Interfacing
 - 2x Medium Weight Interfacing

Place on f



Place on fold

FABRICLAND
Sewing Machine
Cover

SIDE POCKET PIECE

- Cut:
- 2x Fabric/Mesh/Vinyl

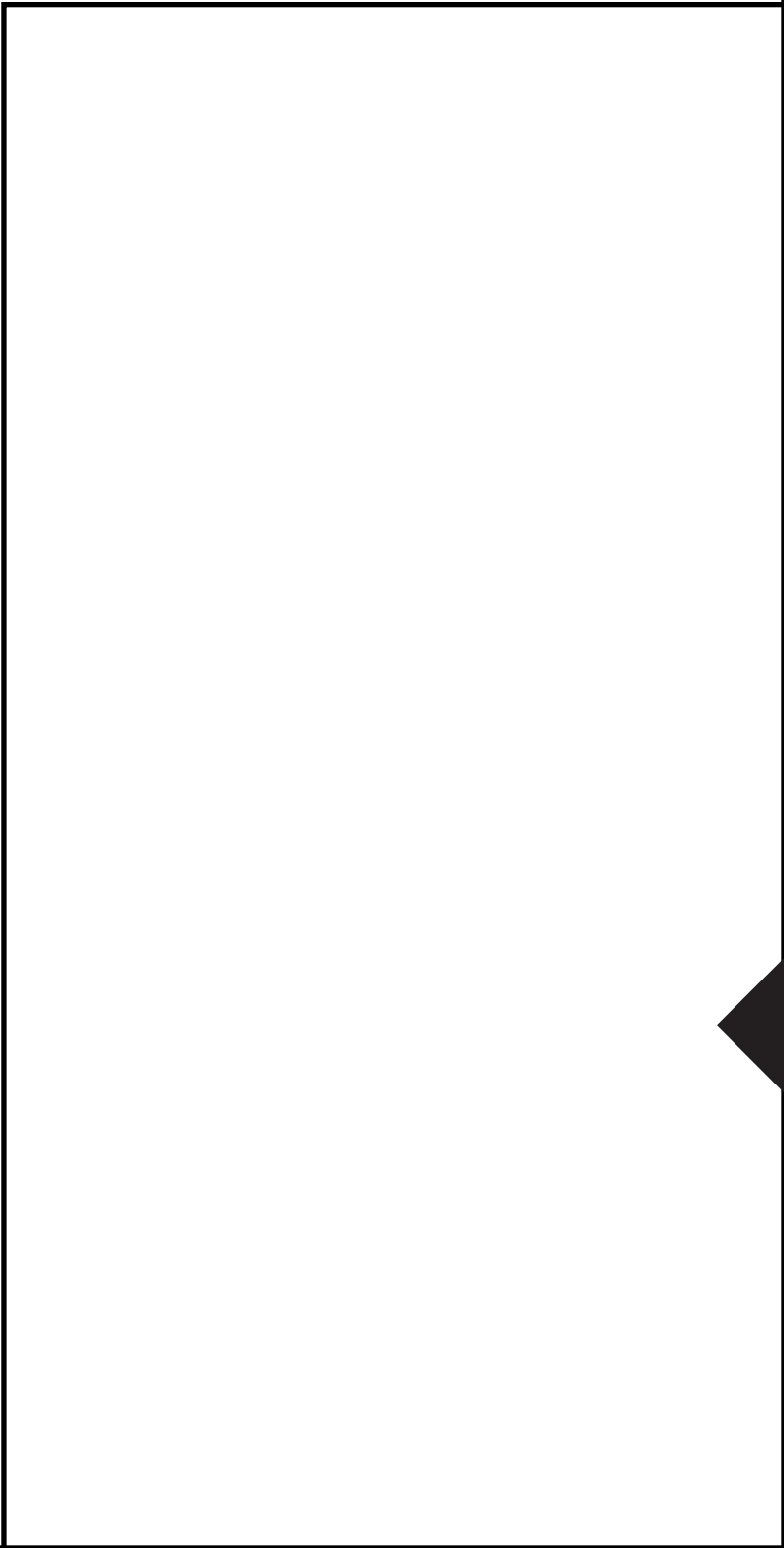


FABRICLAND[®]

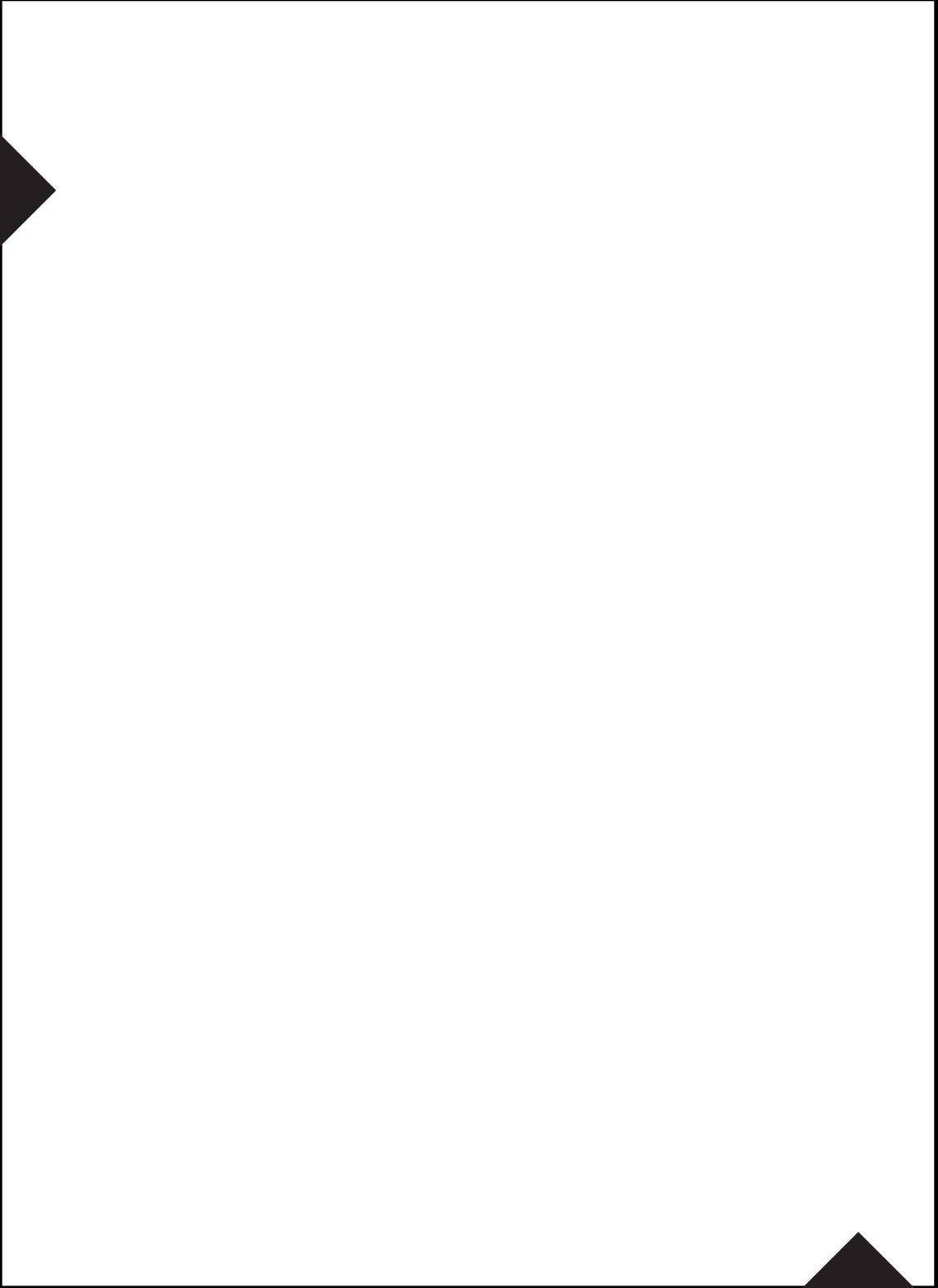
Sewing Machine

Old





Place on fold



H

FABRICLAND

Sewing Machine Cover

CENTRE PIECE

Cut:

1x Fabric

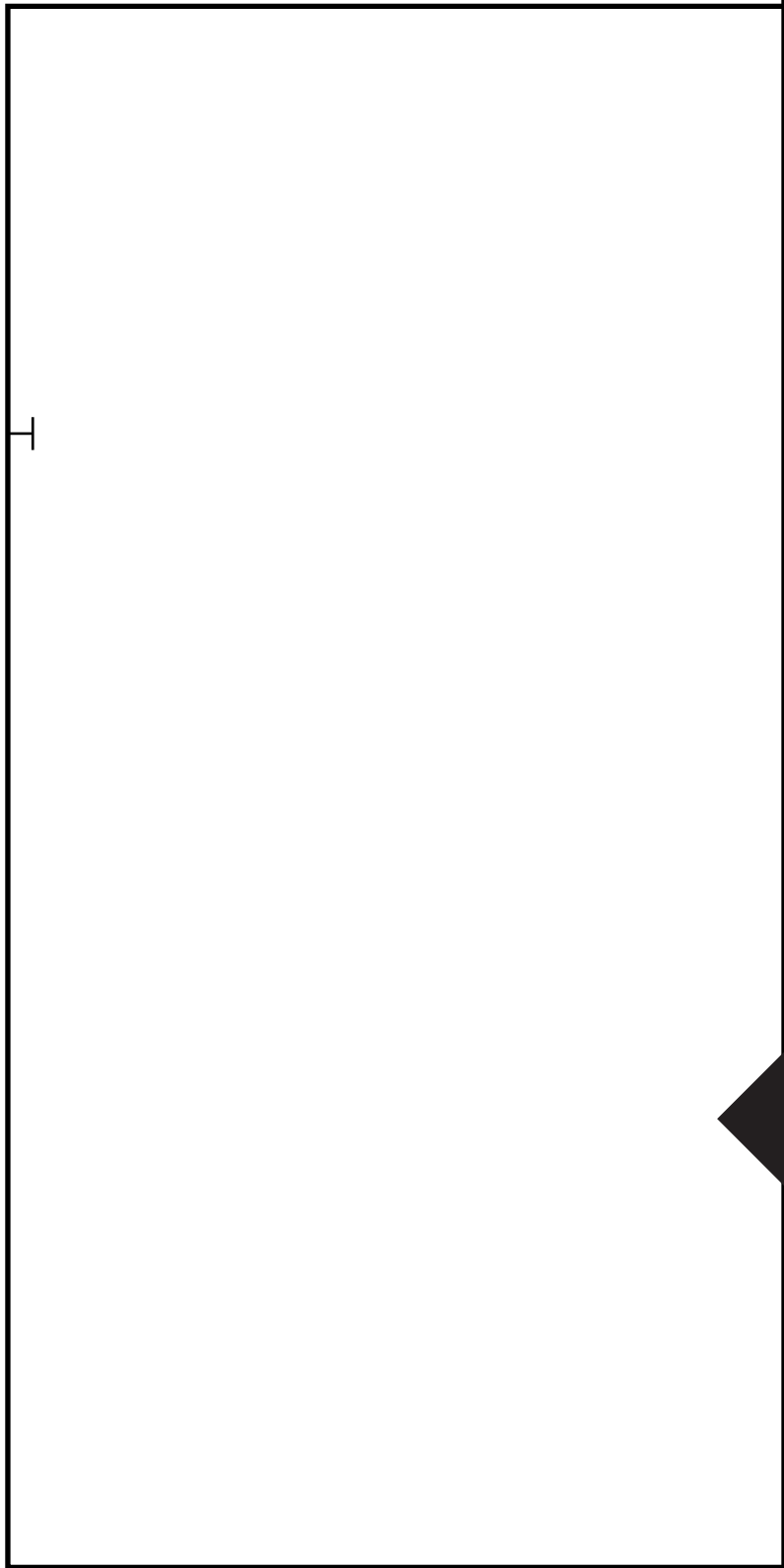
1x Lining

1x Light Weight Interfacing

1x Medium Weight Interfacing

(Bottom of cover)

H



H

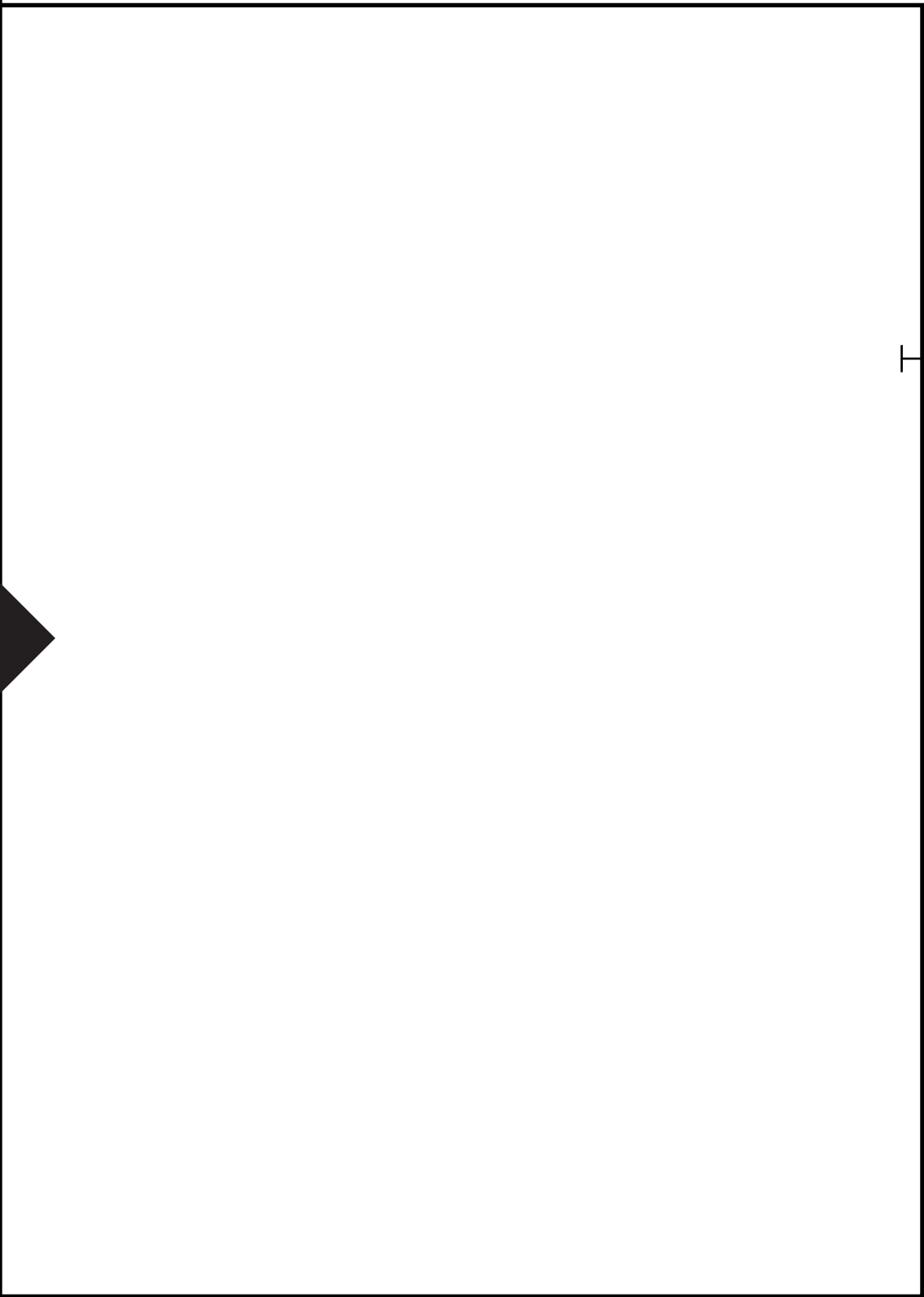
FABRICLAND[®]

Sewing Machine Cover

CENTRE POCKET PIECE

Cut:

1x Fabric/Mesh/Vinyl



T