

*FABRICLAND*

# Detachable Collar & Cuff



# Detachable Collar & Cuff

Add Faux Fur or Sherpa accents to your current jacket with options for a short and long collar. The cuff instructions can be made to coordinate with both Sherpa and Faux Fur.

## What you need

- Thread
- Pins
- Sewing Machine
- Scissors (Fabric & Paper)
- Hand Sewing Needle
- Fabric Chalk
- Printer + Paper
- Tape (For the printed paper pattern sheets)

### Sherpa Shirt Collar

- 7 Shoe Clips
- 9.5" (25cm) Sherpa and Lining

### Long Fur Collar

- 2 Shoe Clips
- 17" (45cm) Faux Fur and Lining

### Cuff

- 2 Shoe Clips per Cuff
- 9.5" (25cm) Faux Fur or Sherpa

Note: The fabric recommendations will change when the pattern is altered. It's best to measure your altered pattern before buying fabric.

## Fabric Recommendations

---

- Faux Fur or Sherpa.
- Cotton for the lining.

## Tips before you start

---

- It's a good idea to pre-wash and press your cotton before you start. Faux Fur is not machine-washable, so follow the care instructions for your chosen fabric.
- Press using a pressing cloth to prevent damaging your fabric. Test your iron settings on a scrap piece of fabric before you start your project.
- Be mindful of cutting faux fur. Check out our video with more info <https://fabricland.ca/howto/faux-fur.php>
- Decide approximately what length you want your collar to be before you cut your fabric and shorten or lengthen the pattern accordingly.
- Try sewing on a scrap piece of fabric before sewing your garment pieces. Adjust your tension, stitch length, and needle type accordingly.



# Instructions for the collar



## Step 1: Download and cut out the pattern

Download the collar pattern from our website. Decide which pattern you would like to make as there are two to choose from: The Sherpa Shirt Collar or the Long Fur Collar (Both patterns are in the same PDF download). The type of jacket you have will determine which collar to use. Print and tape the pages together and cut out the pattern with paper scissors. Make alterations using the pattern adjustment guide. You will need to measure across the back of the bodice from shoulder to shoulder along the collar seam. Place the pattern piece over your collar to make sure the size is right.

Here are some recommendations of jackets that would best pair with each collar:

Sherpa Shirt Collar: Bomber Jacket, Harring Jacket, Car Coat.

Long Fur Collar Collar: Trench Coat, Over Coat, Blazer.

Note: The steps of the collar are the same for the Sherpa Shirt Collar and the Long Fur Collar. The pictures for these steps are of the Long Fur Collar because there are more tips for sewing with this collar than the Sherpa Shirt Collar.

The thickness of the jacket's material could influence the fit of the detachable collar. The shoe clips fit best on approximately 2mm thickness of fabric. Feel free to add more shoe clips for additional stability.

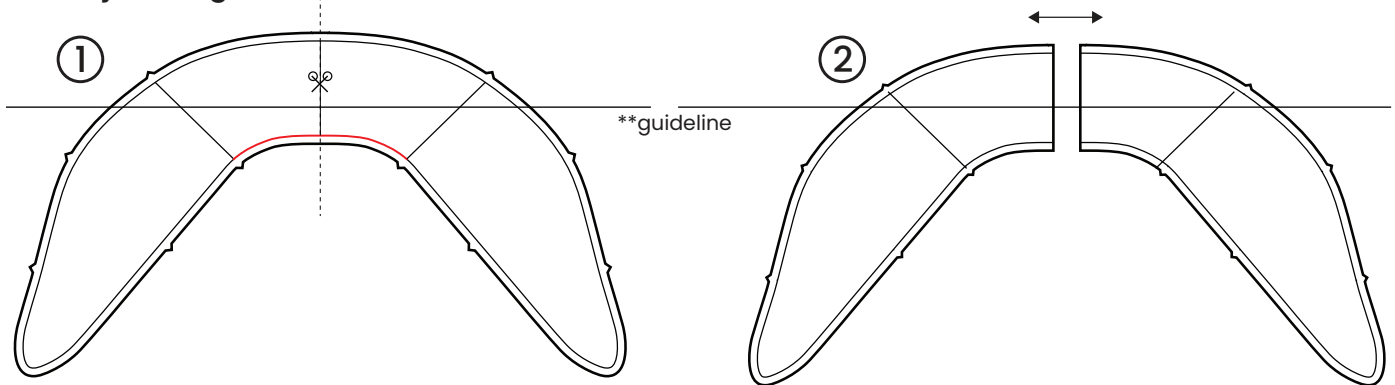
## Pattern Adjustments Guide Long Fur Collar

**NOTE: Compare the top collar pattern piece to your jacket collar and whatever adjustments you need to make to the top collar, you will also make to the under collar.**

**Connect the lines between your cut pieces after you make your adjustments and then cutout your new pattern.**

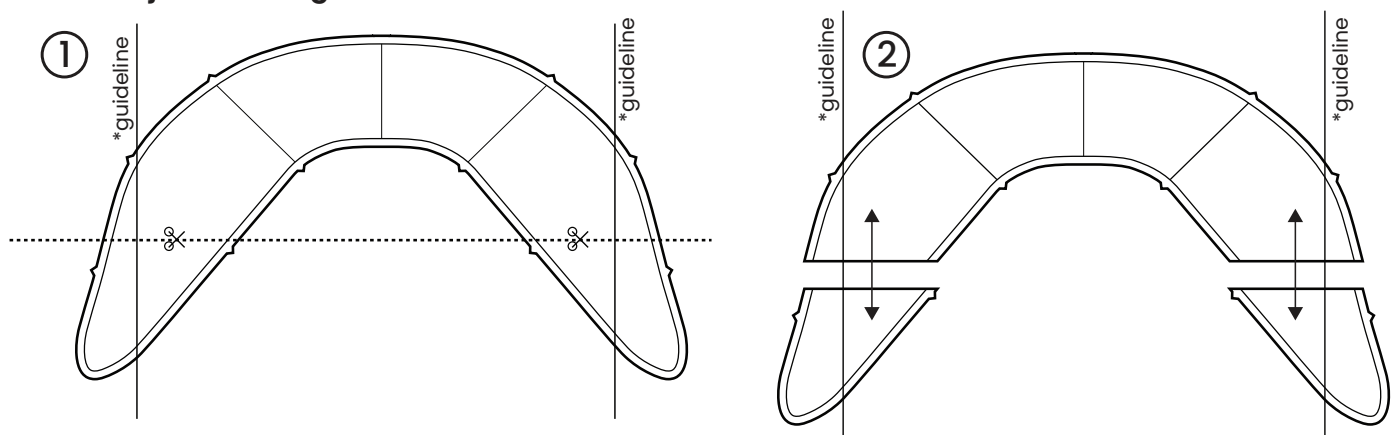
Measure the back neckline from shoulder to shoulder along the inner collar on your jacket and compare it to the inner back neckline of the collar pattern. Lengthen or shorten the neckline with using this method on your pattern.

**To adjust length of the back neckline.**



Lay your pattern piece over your jacket collar and decide how much you need to lengthen or shorten your pattern. Cut the pattern anywhere near the bottom of the collar to lengthen or shorten the pattern.

**To adjust the length of the front collar.**





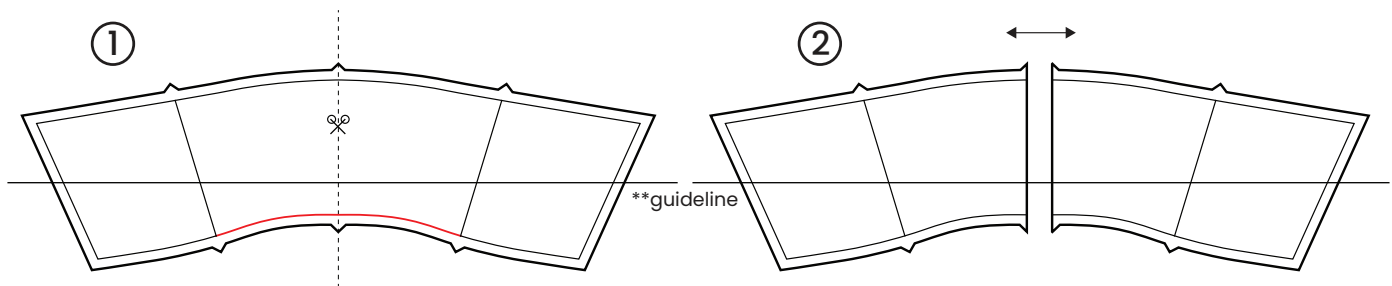
## Pattern Adjustments Guide

### Sherpa Shirt Collar

**NOTE: Compare the top collar pattern piece to your jacket collar and whatever adjustments you need to make to the top collar, you will also make to the under collar.**  
**Connect the lines between your cut pieces after you make your adjustments and then cutout your new pattern.**

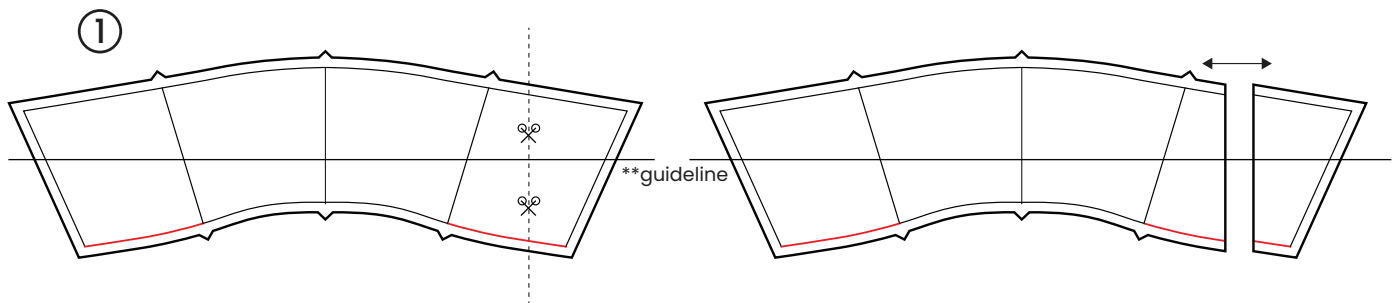
Measure the back neckline from shoulder to shoulder along the inner collar on your jacket and compare it to the inner back neckline of the collar pattern. Lengthen or shorten the neckline with using this method on your pattern.

**To adjust length of the back neckline.**



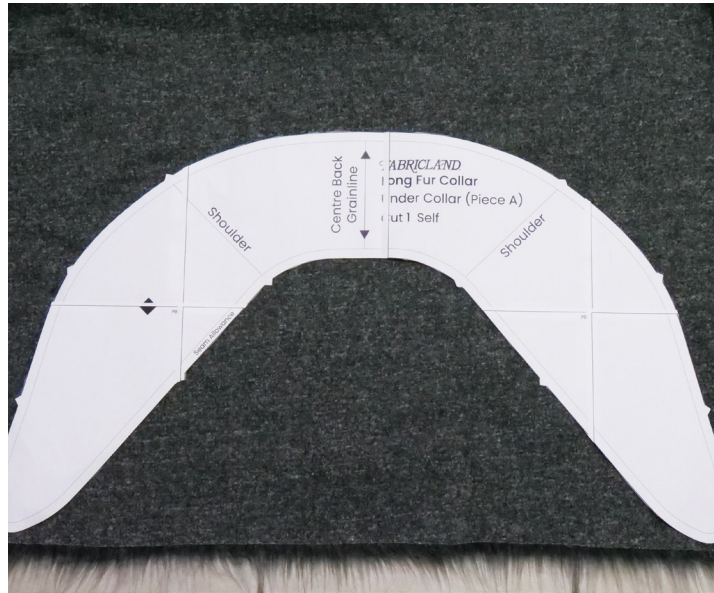
Measure the back neckline from shoulder to shoulder along the inner collar on your jacket and compare it to the inner back neckline of the collar pattern. Lengthen or shorten the neckline with using this method on your pattern. Cut the pattern anywhere near the outside of the front collar to lengthen or shorten the pattern.

**To adjust length of the front neckline.**



\*When making this adjustment, move the pieces along a guideline parallel to the grainline.

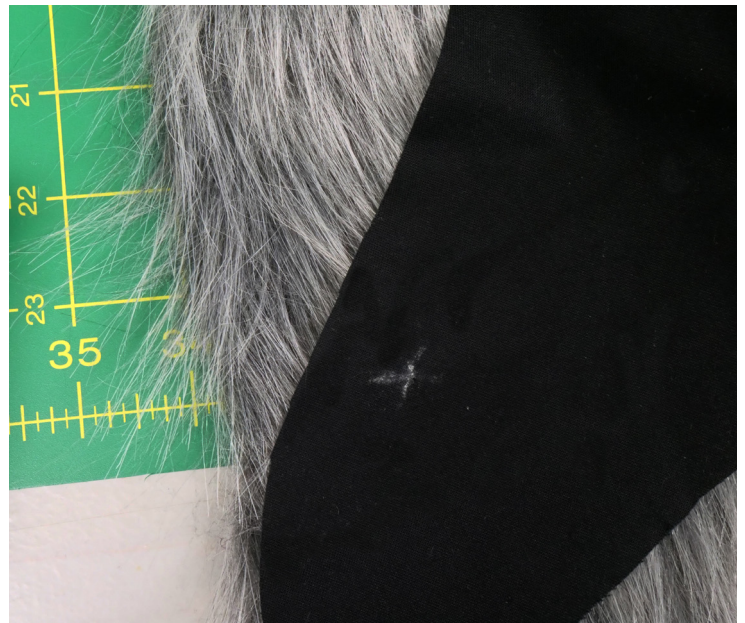
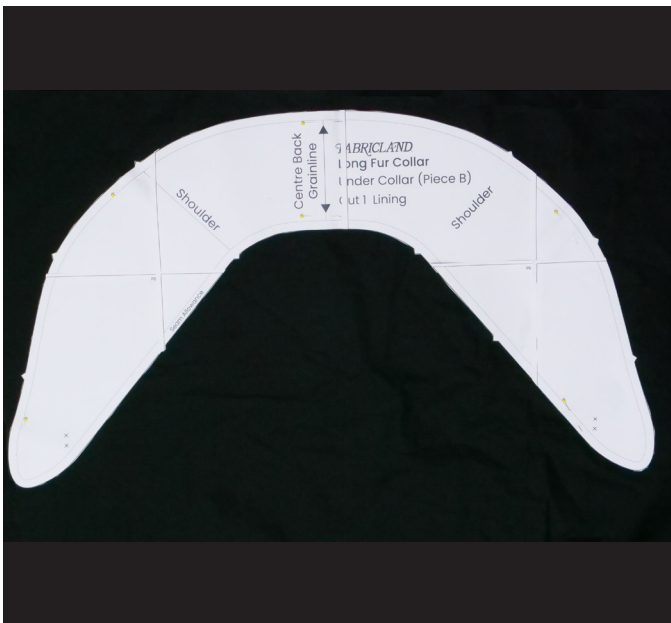
\*\*When adjusting your pattern move the pieces along a guideline perpendicular to the grainline.



## Step 2: Cut out the top of the collar

Place the pattern on the wrong side of the material and pin. Cut out this shape using fabric scissors.

*Tip: When using faux fur, check that the pile is pointing towards the ends of the collar.  
Trim the outer edge of the fur pile shorter or comb it towards the middle.*



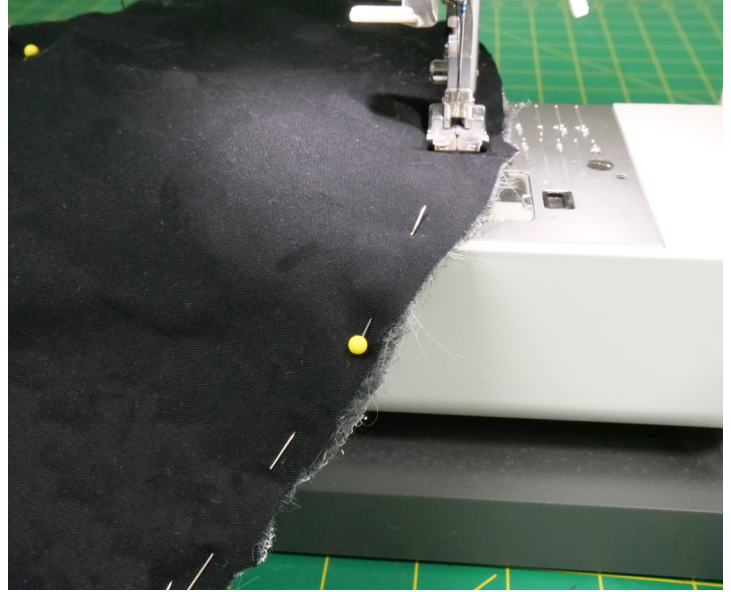
## Step 3: Cut out the collar lining

Pin the lining collar pattern to the lining fabric and cut it out with fabric scissors.

Mark with chalk an X on the right side of the fabric. The pattern will indicate the placement of the X.

*Tip: The lining must be 2mm smaller than the top fabric all the way around the edges.*





#### Step 4: Attach the under collar to the top collar

Place and pin the right sides together of the lining and the collar leaving 4" (10cm) in the centre open.

Stitch around the edges with a seam allowance of  $5/8$ " (15mm) and backstitch.

*Tip: Smooth the fur pile towards the centre of the collar when pinning.*



#### Step 5: Trim the seam allowances

To reduce bulk, trim the seam allowances down close to the seam line except where the unstitched opening is. Trimming the seam allowance will help when the collar is turned inside out.



### **Step 6: Turn the collar**

Turn the collar inside out using the unstitched opening. Finger press the seam from the inside and pull out any fur trapped in the seam to reveal a near finished look.

Fold the opening seam allowances into the inside centre of the collar and hand sew the opening closed



### **Step 7: Attach the clips**

Hand sew the shoe clips onto the X markings of the collar. The clips will allow you to clip the collar to your jacket.





**Step 8: Attach the collar to the jacket to complete**

Clip the detachable collar to the edge of the collar on the jacket.

**Enjoy the collar!**



**Long Fur Collar**



**Sherpa Shirt Collar**



# Instructions for the cuff



Note: This pattern will be the same for all materials used to make the sleeves. The maker can make alterations to make the sleeve longer and wider by using the pattern adjustment guide.

The thickness of the jacket's material could influence the fit of the detachable cuffs. The shoe clips fit best on approximately 2mm thickness of fabric. Feel free to add more shoe clips for additional stability.



## Step 1: Download and cut out the pattern

Download the cuff pattern from our website. Tape the pages together and cut out the pattern with paper scissors.

Measure the circumference of your arm with your jacket on and adjust the length of your cuff accordingly following the pattern adjustment instructions. This pattern is made for a 7.5" (19cm) wrist.

Make alterations using the pattern adjustment guide.



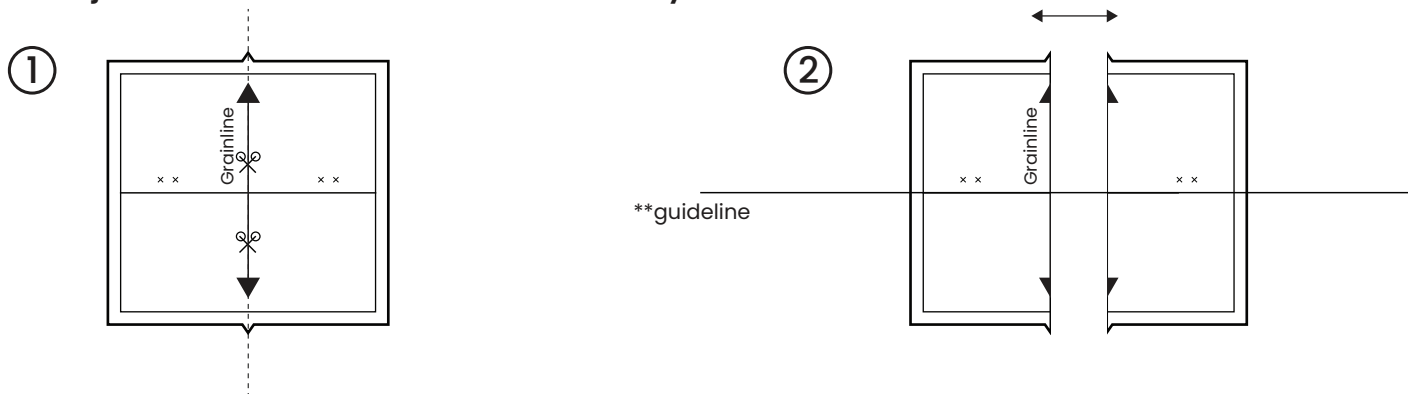
## Pattern Adjustments Guide

### Cuff

**NOTE: Connect the lines between your cut pieces after you make your adjustments and then cutout your new pattern.**

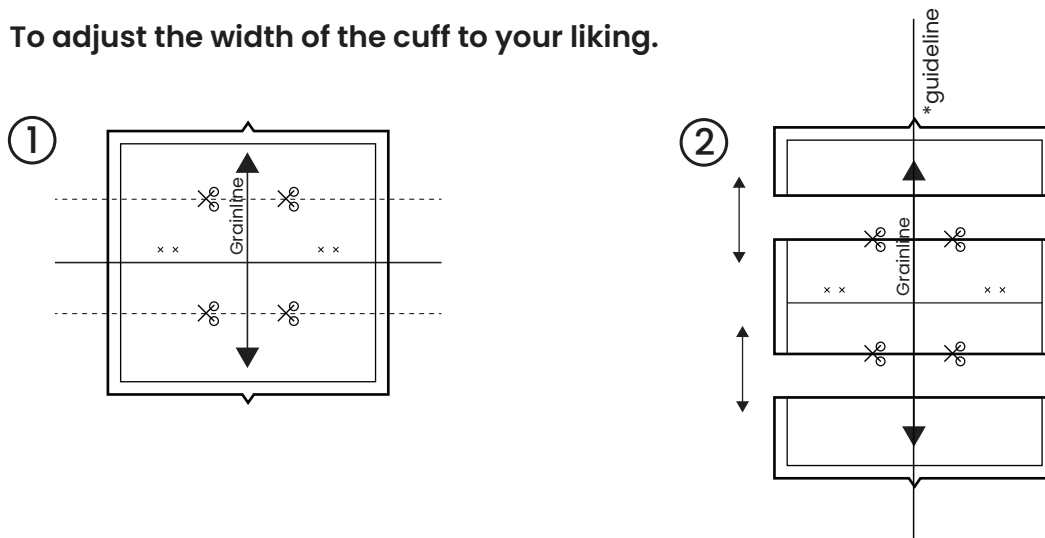
Measure the circumference of your wrist with your jacket on over top of your sleeve. Cut along the centre grainline line on the cuff pattern to lengthen or shorten the width of your cuff.

**To adjust the circumference of the cuff to fit your wrist.**



Cut a straight line on both sides of the fold line on your cuff. Spread or overlap them until you get your desired cuff width.

**To adjust the width of the cuff to your liking.**



\*When making this adjustment, move the pieces along a guideline parallel to the grainline.

\*\*When adjusting your pattern move the pieces along a guideline perpendicular to the grainline.



### Step 2: Pin the width

Fold fabric in half along the fold line, matching up the notches with right sides together. Push the fur towards the inside as you pin.



### Step 3: Sew the width

Sew the fur 1/2" (1.3cm) along the edge with the notches. Backstitch at the beginning and end.



### Step 4: Turn right side out and pin

Begin to turn the cuff right side out and stop halfway, when the open edges meet.

Pin the open edges together, pushing the fur inside the cuff.



### Step 5: Sew the length

Sew the seam together 1/2" (1.3cm), leaving a 2" (5cm) opening.

Backstitch at the beginning and end.





### **Step 6: Flip the cuff**

Flip the cuff right side out through the opening.



### **Step 7: Hand stitch the opening and the clips**

Hand stitch the opening closed.

Hand stitch two shoe clips onto each side of the cuff from the inside. The clips should be on the edge to be able to also clip onto the sleeve.



**Step 8: Attach the cuffs to the jacket sleeve to complete**

Clip the collar to the edge of the jacket sleeve.



©Fabricland 2023.

Every effort has been made to ensure that all projects are error free. As we have no control over the execution of instructions no warranty can be given, nor results guaranteed. This pattern is not available for commercial resale. You cannot copy and sell this pattern. You may not sell items you make with this pattern.