

Christmas Stockings



Paw



Rustic



Classic



The one who stole Christmas

Christmas Stockings

What you need

Per Stocking

- 16" (40cm) Fabric
- 16" (40cm) Lining
- 10" (25cm) Contrasting Fabric
- 10" (25.5cm) Trim (To hang the stocking)
- 8" (20cm) Medium Weight Fusible Interfacing
(Pet Stocking Only - See Step 3 for more info)
- Scissors (Fabric and Paper)
- Thread
- Sewing Machine
- Printer + Paper
- Pins
- Tape

Fabric Recommendations

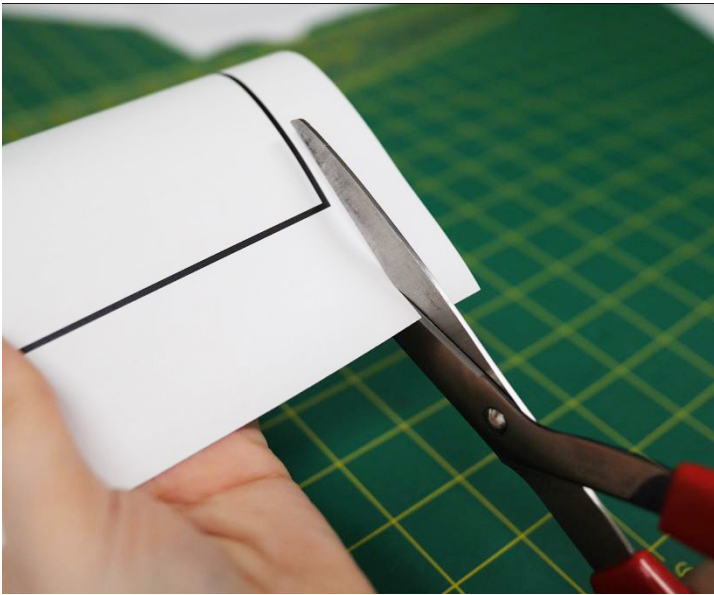
Medium weight non-stretch (a little stretch is fine) fabrics such as:

- Lace (over a solid)
- Sherpa
- Velvet
- Faux Fur
- Canvas
- Metallics

Tips before you start

- It's a good idea to pre-wash and press your fabric before you start, especially with cotton because it will shrink. However, some fabrics, such as faux fur, are not machine-washable, so follow the care instructions for your chosen fabric.
- Try sewing on a scrap piece of fabric before sewing your garment pieces. Adjust your tension, stitch length, and needle type accordingly.
- When sewing with faux fur, be mindful that the fur can be very thick to sew through. To reduce fur bulk, cut down the fur pile to the backing. The width of the edge pile being trimmed should be the same width as the seam allowance. The remainder of the fur pile can be brushed towards the centre to ensure it doesn't get in the way of the seam when sewing. **Tips & Tricks** - <https://fabricland.ca/howto/faux-fur.php>

Instructions



Step 1: Print & cut out the pattern

Download the Christmas Stocking Pattern from our website and tape the pages together in order. Next, cut out the pieces with paper scissors. The steps will be the same for the standard stocking as for the pet stocking, except when adding the paw applique to the pet stocking.

Note: Alter the cuff pattern by cutting on the dotted alteration line. This is helpful when using faux fur trim which has a smaller length to the pattern piece. Make sure to cut the cuff lining the same size as the cuff main fabric by using the same altered pattern.



Step 2: Cut out pattern pieces from fabric

Pin and cut out the pattern pieces on the fabric and the lining with fabric scissors.

Note:

- Be mindful of directional prints and textures when placing the pattern pieces onto the fabric.
- If you want the top cuff to be in a coordinating or contrasting fabric pin and cut accordingly.



Tips for basting:

- If there are overlapping layers, such as lace over canvas, cut out the same pattern pieces in both fabrics (or in the shape that you would like the overlapping layer to be) and baste stitch around the edges with a 1/2" (1.3cm) seam allowance around the layered piece.
- When baste stitching, use a stitch with a wider width as this stitch is just to hold these pieces together temporarily.



Step 3: Pet Stocking Applique

For the pet stocking only, iron fusible interfacing onto the wrong side of a contrasting fabric that will be used for your applique. Cut out the applique pattern pieces.

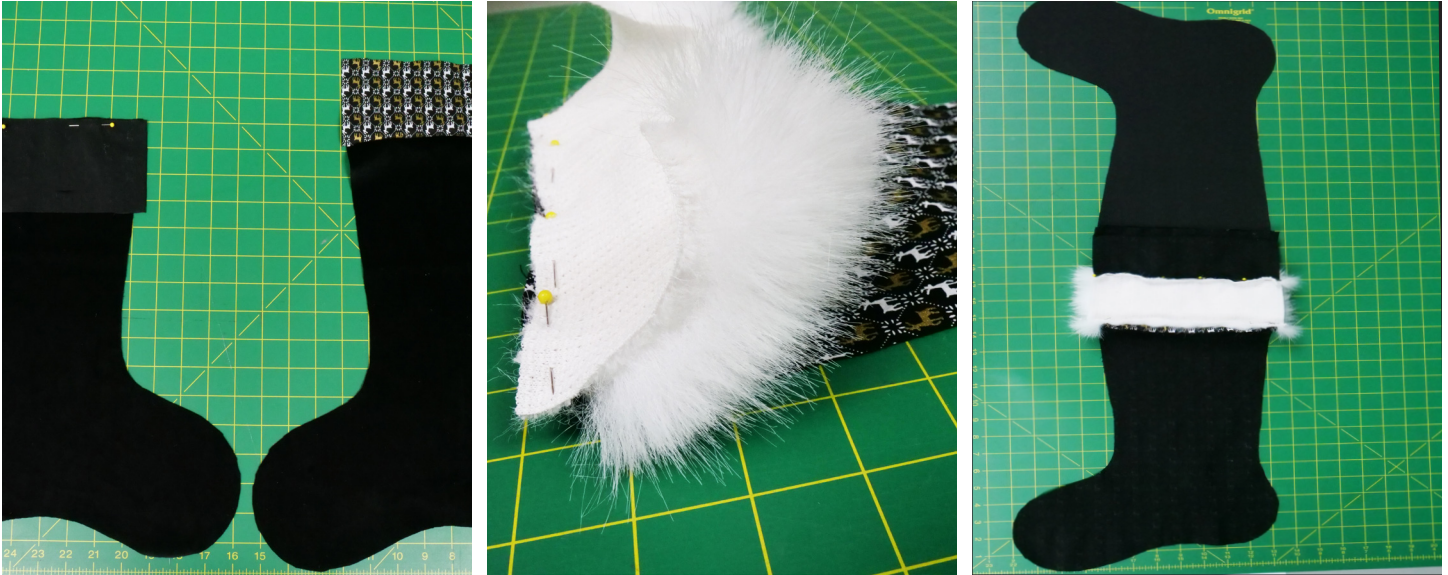
Place the appliques interfacing side onto the the right side of one main stocking and pin in place. The main stocking pattern has dotted lined guide to help with placement.

Zig-Zag stitch the edges of the applique to stabilize.

Note: There are two different types of interfacing that can be used. Double-sided paper back interfacing and one-sided fusible interfacing. Either interfacings when fused will help prevent the applique from fraying.

One-sided fusible interfacing: Hold the applique in place with a pin when sewing. This interfacing is recommended because it is versatile to be used on all fabrics.

Double-sided fusible interfacing: Peel the paper backing and iron the applique onto the stocking in place. This interfacing can only be used on materials that will allow heat. For example, it's not recommended for use on velvet. This interfacing is optional, but not recommended. This interfacing is good for keeping the applique in place while sewing.



Step 4: Attach the cuff to the stocking

Pin the long side of the cuff lining to the top of the main stocking fabric, right sides together, and sew $1/2$ " (1.3cm) across the layers. Do this for both pieces of the cuff lining and the main stocking fabric.

Pin the long side of the cuff fabric and the top of the stocking lining right sides together. Do this for both pieces of the cuff fabric and the stocking lining.

With one stocking piece, take the 10" (25.5cm) trim and fold it in half. Place the two raw ends of trim between the pinned fabric of the cuff and the stocking lining, with all raw edges aligned. The trim should be placed 1.5" (3.8cm) from the edge of the fabric.

Sew across the pinned area of both pieces.

Sew the lining cuff to the fabric cuff, right sides together. Make sure that when folded the stocking toes are facing the same direction.



Step 5: Sew around the perimeter of the attached pieces

With right sides together, sew around the two stocking fabrics and cuffs with a $5/8$ " (1.6cm) seam allowance and back stitch.

Make sure to leave a 4" (10cm) opening on the lining main piece and back stitch as this opening is where you will turn the fabric inside out.

After sewing, snip on the seam allowance towards the seam on any curves. This will help keep the fabric flat when the stocking is turned flat.



Step 6: Turn the fabric

Turn the fabric right side out through the 4" (10cm) opening in the lining.

Finger press all seams to make sure the shape is consistent.

Straight stitch and back stitch closed the opening in the lining.



Step 7: Where to tack on the stocking

Push the lining inside of the main fabric.

Fold the cuff over so that only the main fabric of the stocking and cuff are showing.

Tip: The stocking can be tacked in place if you feel it's necessary. The best place to tack is the seams connecting the cuffs to stocking. This is a good way to stabilize the cuff lining to stay parallel to the main cuff. Another great place to tack is the edge of the cuff to the stocking. Tacking in between the seam allowances helps to hide the thread.



Your stocking is now complete! Feel free to accessorize or personalize it further!



©Fabricland 2023.

Every effort has been made to ensure that all projects are error free. As we have no control over the execution of instructions no warranty can be given, nor results guaranteed. This pattern is not available for commercial resale. You cannot copy and sell this pattern. You may not sell items you make with this pattern.