

# Snuffle Mat Stocking



# Instructions

Difficulty Level: Easy/Intermediate

## What You Need

---

- Thread
- Fleece Needle
- Brown Fleece (0.5m)
- Red Fleece (1m)
- Trim or Ribbon (10mm)

## Other Handy Tools

---

- Cutting Mat
- Scissors
- Rotary Cutter
- Thread Snips
- Craft Clips/Pins
- Chalk pencil or marker

## Fabric Recommendations

---

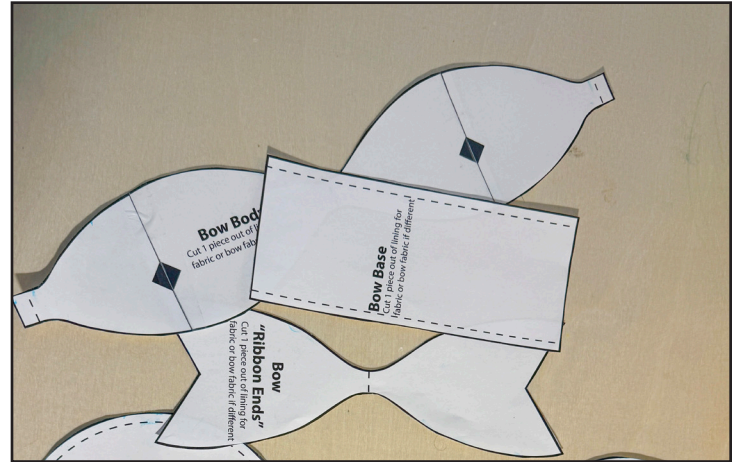
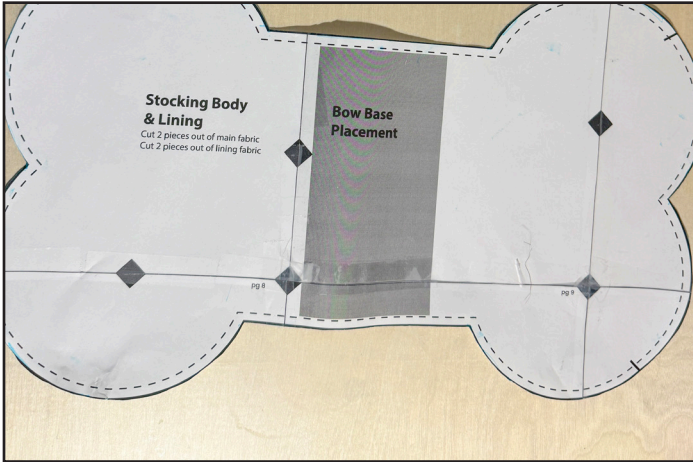
We recommend fleece because it's durable, doesn't fray, resists drool, creates excellent hiding spots for treats, and is gentle on noses. It's also the safest fabric option for this project. Since the raw edges will be visible in the finished snuffle mat, choosing a fabric that won't fray is essential.

## Tips Before You Start

---

- Use tight small stitches when you attach your strips.
- When making your strips, check the direction of the stretch of the fleece. Make sure the length of the strip has the least amount of stretch.
- If you don't want to cut 1" x 4" strips you can cut a long strip and make loops instead.

# Instructions



## Step 1: Prep Pattern Pieces

Use the black line and black diamonds to line up your pieces, and the pages matching letter to letter. Tape them together and then cut out the individual pattern pieces.



## Step 2: Cut Main Fabric

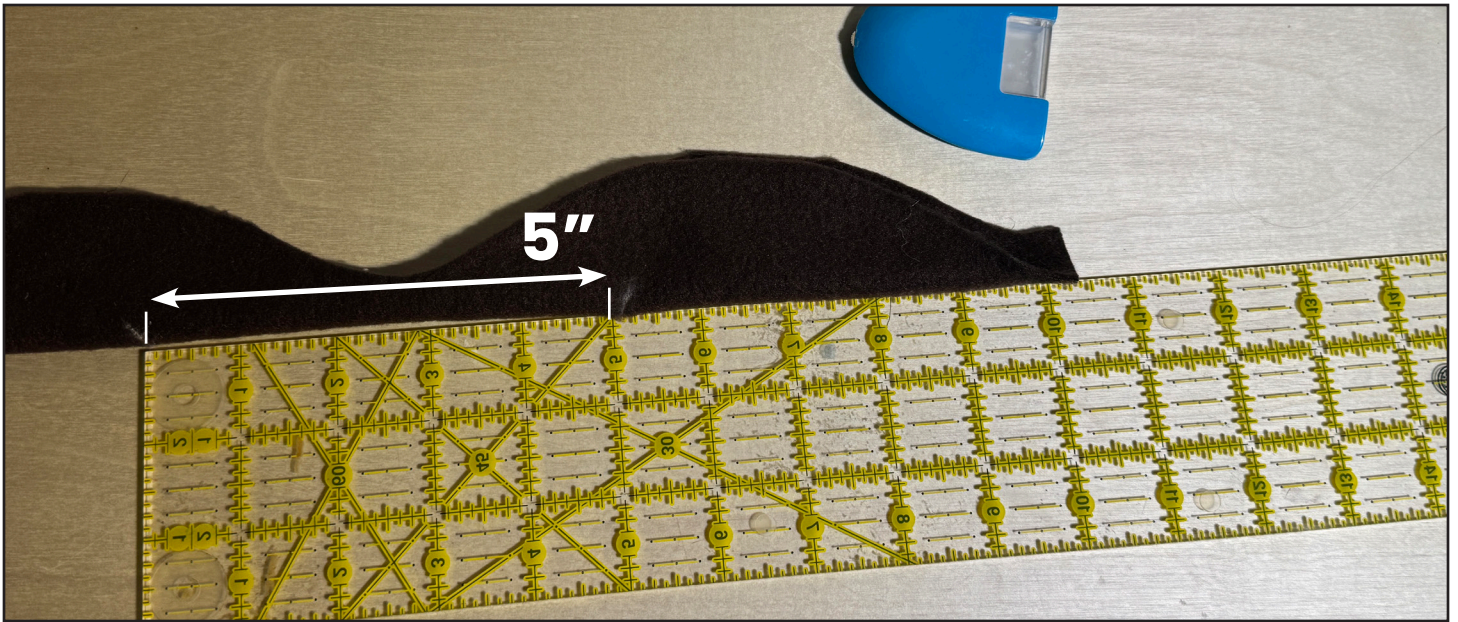
Cut 2 pieces of your main fabric (Red fleece).

## Step 3: Cut Lining Fabric

Cut 2 pieces of the bone shape & the bow pieces from a contrasting fabric (Brown fleece).

## Step 3: Cut Snuffle Strips Out Of The Leftover Main Fabric

Cutout approximately 60 Snuffle Strips.



#### **Step 4: Assemble The Bow**

- Fold the Bow Body Piece in half mark a 5" section in the centre of the piece. Straight stitch between the 2 marks you made about 1/8" away from the folded edge.
- Open the bow body piece and place the bow ribbon ends underneath it at the centre. Stitch a vertical line down the centre of the pieces to hold them together.
- Sew the two bow centre loops around the bow body & ribbon ends. Once both loops are on, turn them right side out and criss cross them to create the centre of the bow.



### Step 5: Bow Base

- Hand sew your main bow pieces to the centre of the bow base.
- Pin & sew the bow base to the bone shape.



### Step 6: Sew The Snuffle Strips To Bone Shape

- Mark the centre of your strips (as indicated on the pattern), then begin marking their placement on the bone. For best results, stagger the rows.
- Start sewing along the outermost row and work your way toward the centre. Backstitch at the beginning. When you reach the end of a strip, leave your needle in the down position, lift the presser foot, place the next strip along your marking, and continue stitching. Backstitch again at the end of the row.
- Repeat on both sides of the bow base.



### **Step 7: Sew The Lining Pieces & 2 Sides Of The Stocking Together**

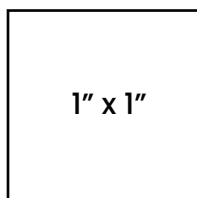
- Sew the lining fabric to the main fabric pieces with a 1/4" seam allowance.
- Sew the back piece to the front piece lining sides together leaving an opening at the top for the stocking pocket.
- Sew your trim or ribbon loop to one side of the opening so your snuffle mat stocking can be hung up with the rest of the families stockings.



©Fabricland 2025.

Every effort has been made to ensure that all projects are error free. As we have no control over the execution of instructions no warranty can be given, nor results guaranteed. This pattern is not available for commercial resale. You cannot copy and sell this pattern. You may sell items you make with this pattern.

# *FABRICLAND* Snuffle Mat Pet Stocking



Measure this box for accuracy.

\*Print at full scale (100%) on 8.5" x 11" paper.

Select "Auto" so the margins don't get cut off.

pages 2 - 4 & 5-7 .....Bone Shape Stocking

pages 4 .....Bow Base

pages 5 - 7 .....Bow Pieces & Snuffle Strips

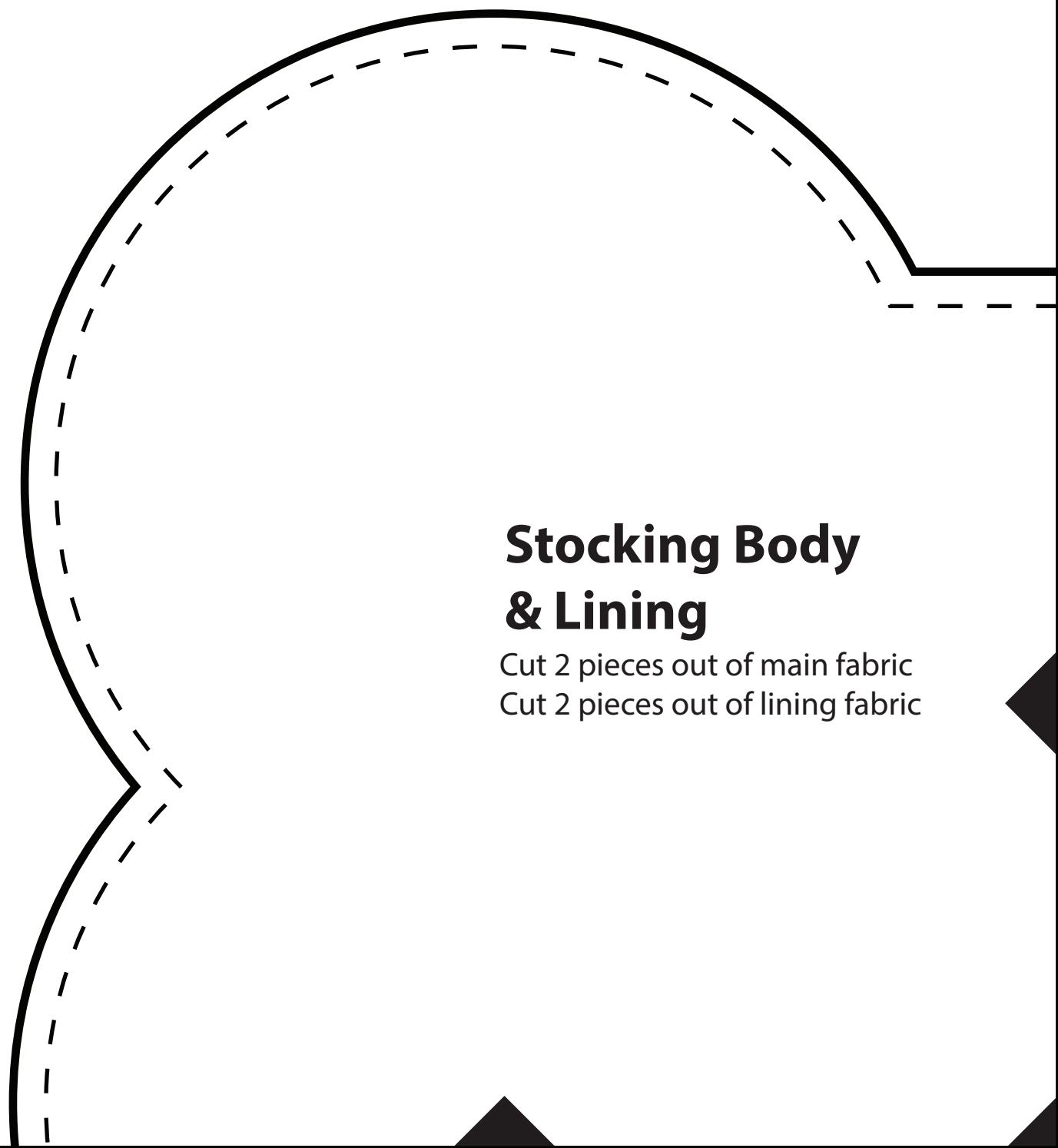
## Legend

— — Sew Lines

— Cut Lines

T Notch

A

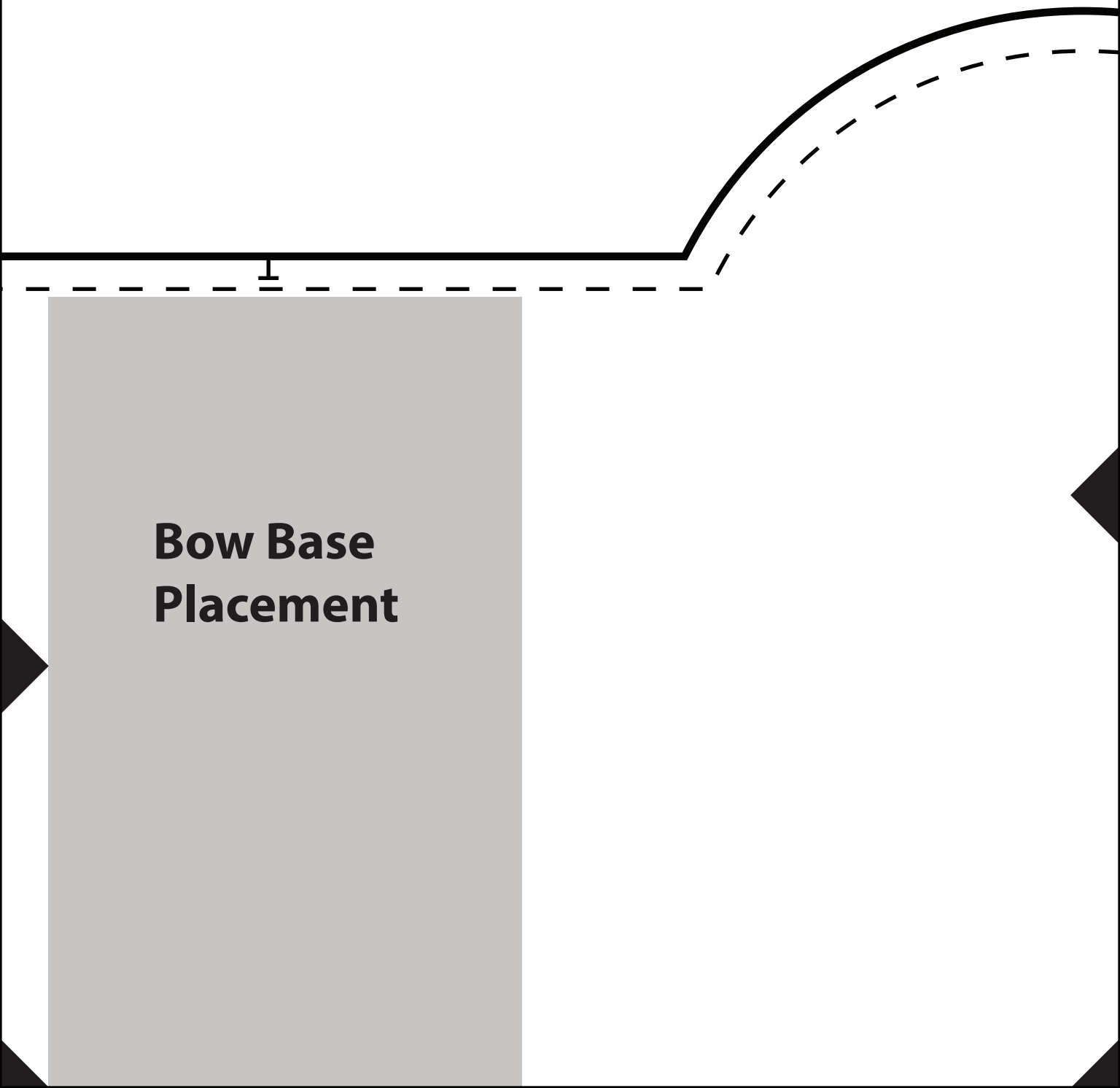


## Stocking Body & Lining

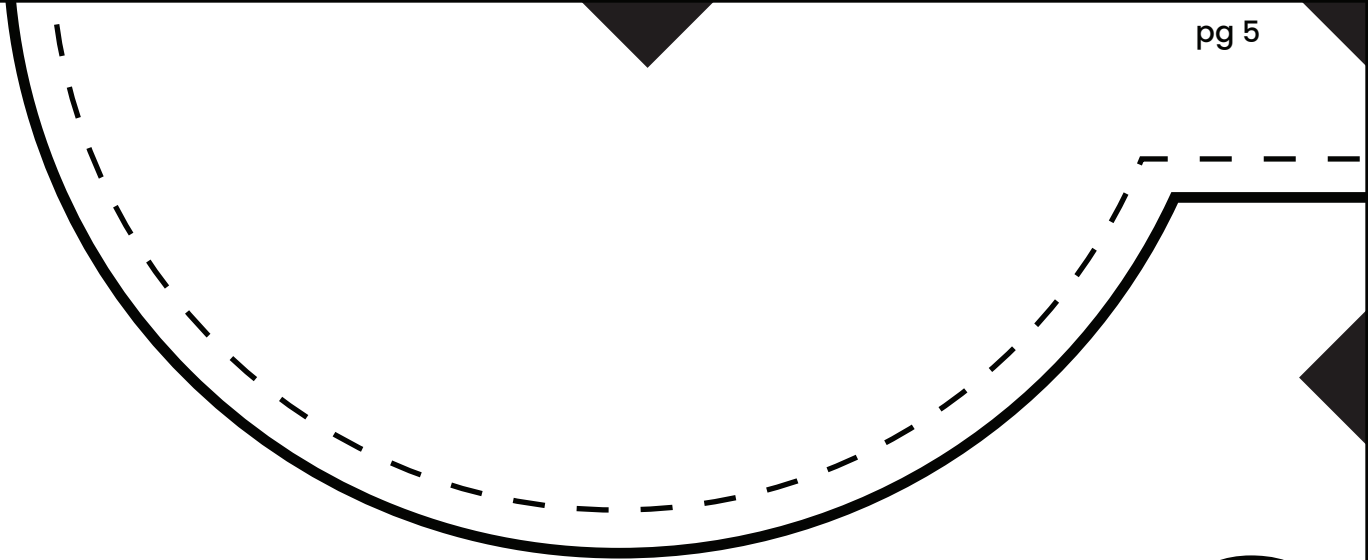
Cut 2 pieces out of main fabric  
Cut 2 pieces out of lining fabric

A

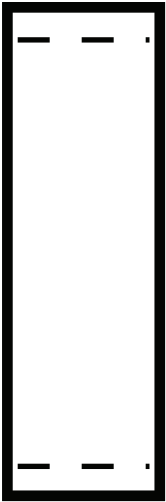
B



**Bow Base  
Placement**

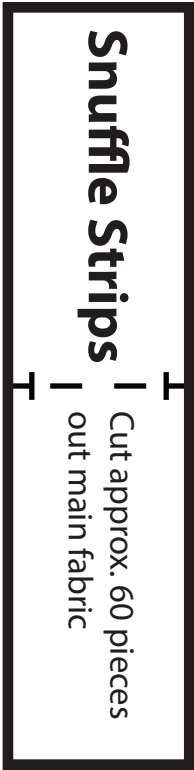


C



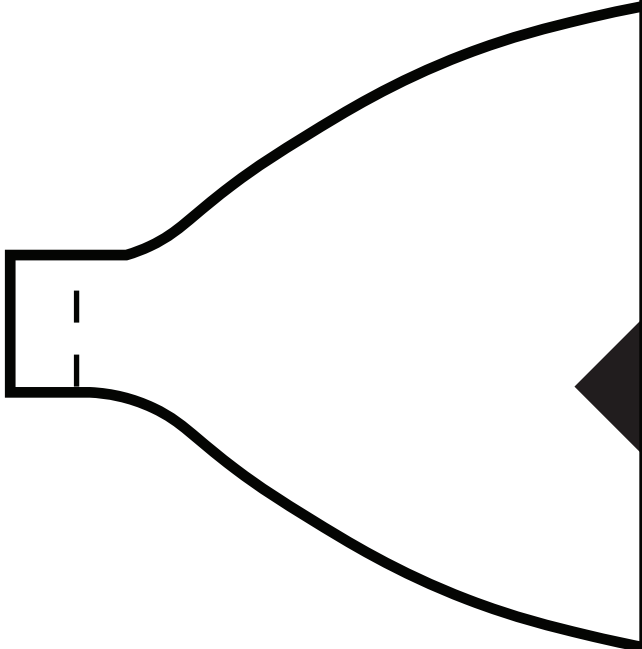
**Bow Centre**

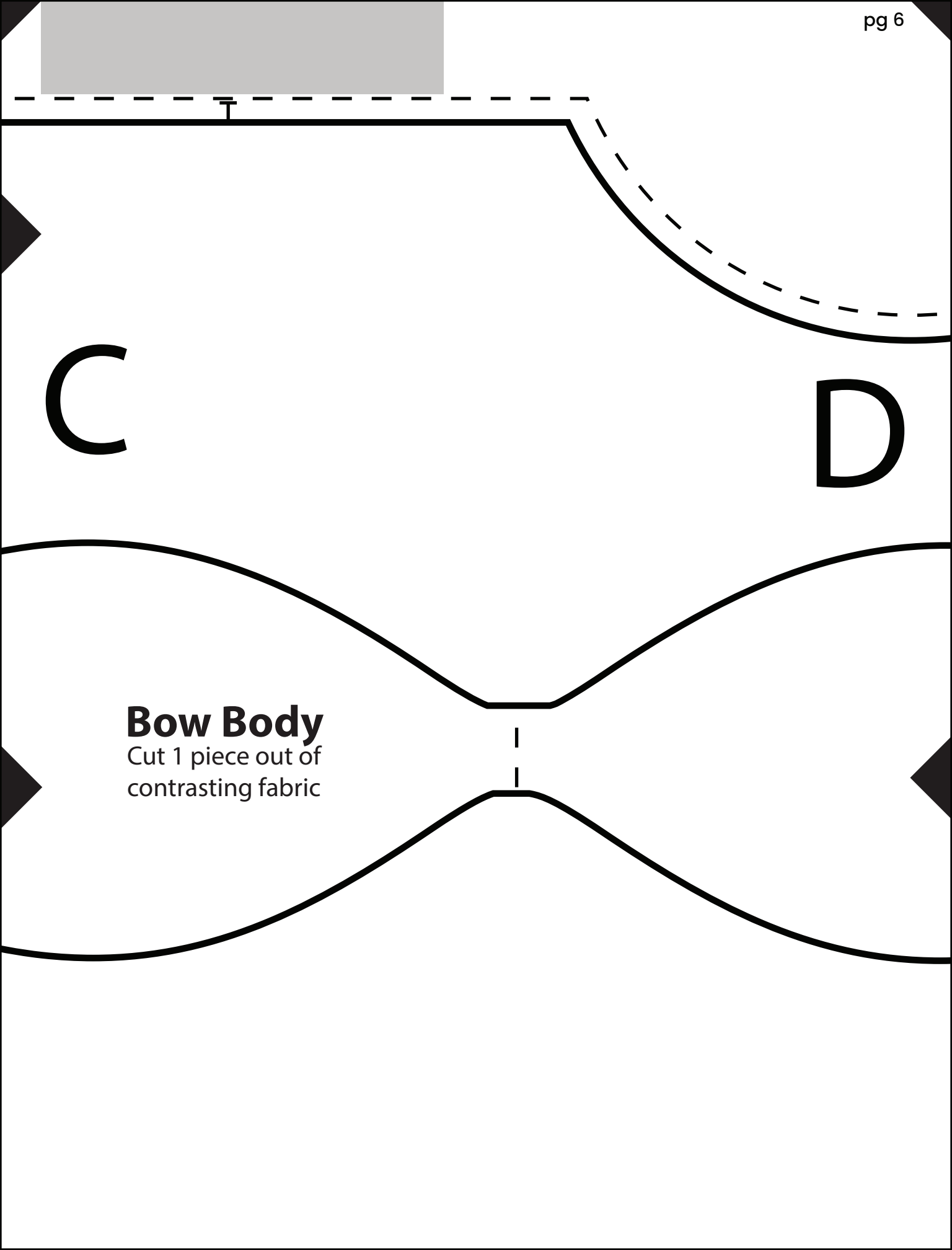
Cut 2 piece out of contrasting fabric



**Snuffle Strips**

Cut approx. 60 pieces  
out main fabric





C

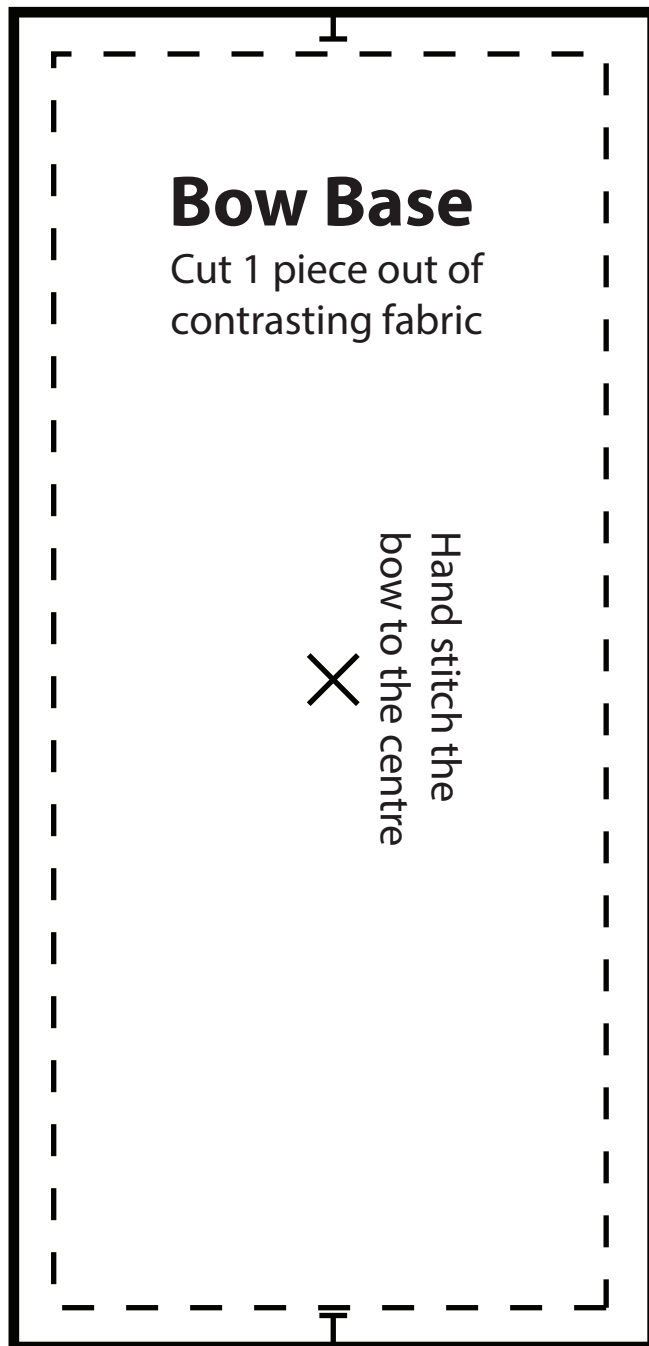
D

**Bow Body**  
Cut 1 piece out of  
contrasting fabric

# B



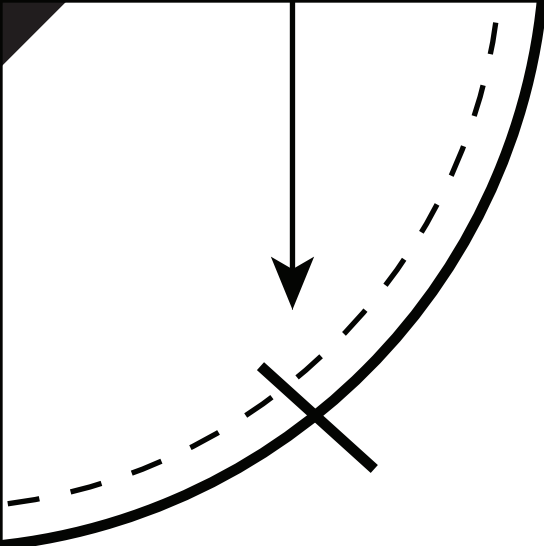
**Leave open  
for stocking  
opening**



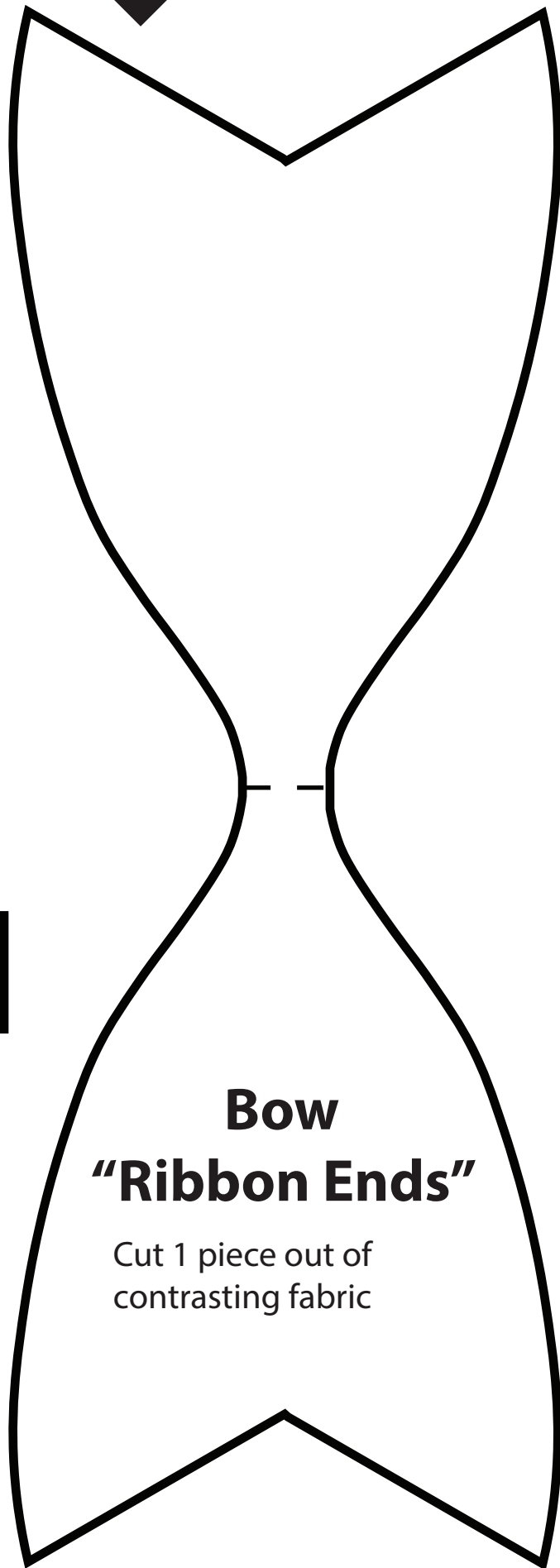
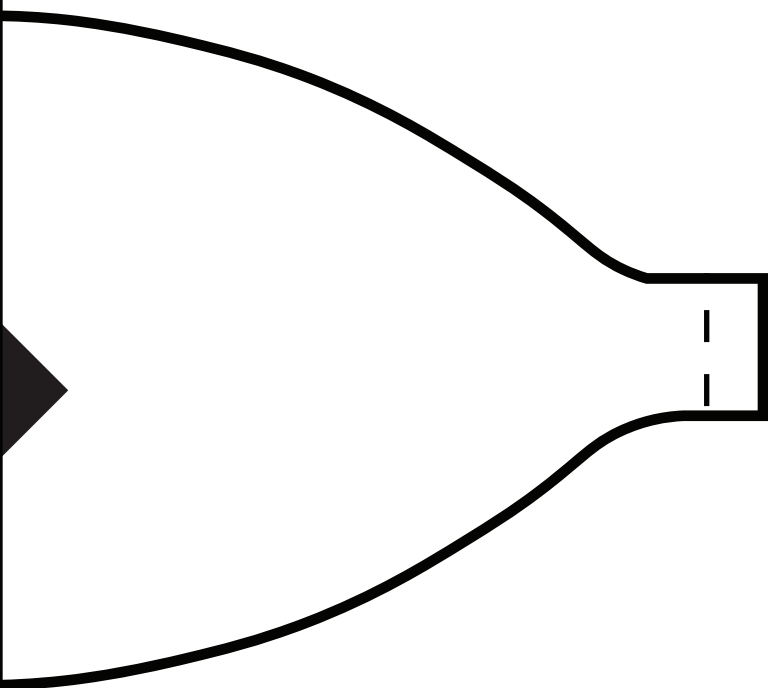
## **Bow Base**

Cut 1 piece out of  
contrasting fabric

Hand stitch the  
bow to the centre



D



**Bow**  
**"Ribbon Ends"**

Cut 1 piece out of  
contrasting fabric

## Legend:

This is how the symbols are used unless otherwise indicated.



Black line: Cut line, when all your pattern pieces are joined the solid black line is where you would cut the fabric.



Letter to Letter: Indicates which pieces and which ends should attach together.



Diamond: Helps line up the pattern pieces so they can be taped together and cut out.



Leave Open: Indicates where to leave an opening for the the stocking.



Stitch Line: Indicates the seam allowance.

