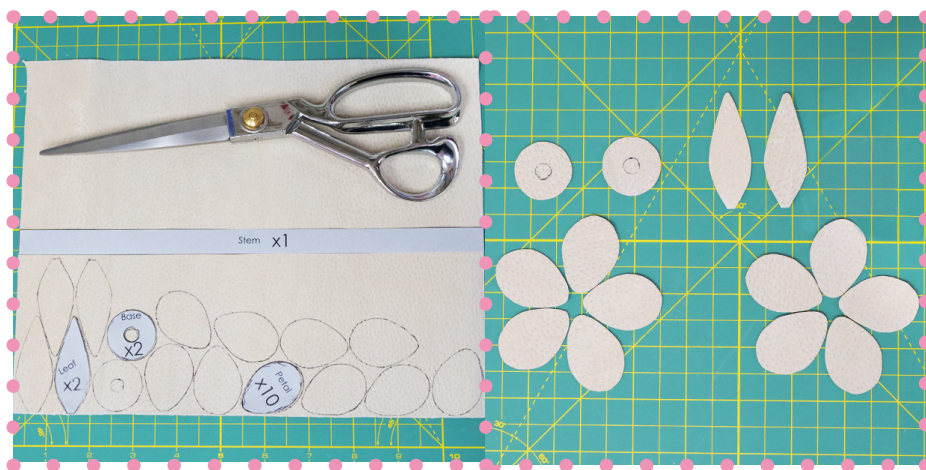


Tulip Keychain

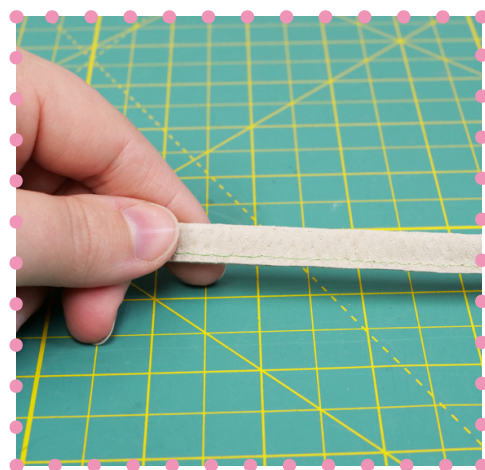
What you need:

- Hand Sewing Needle
- All Purpose Rit® Dye
- Embroidery Thread
- Taupe Leather
- Scissors
- Gold Keychain
- Sewing Machine
- Glue Gun & Glue

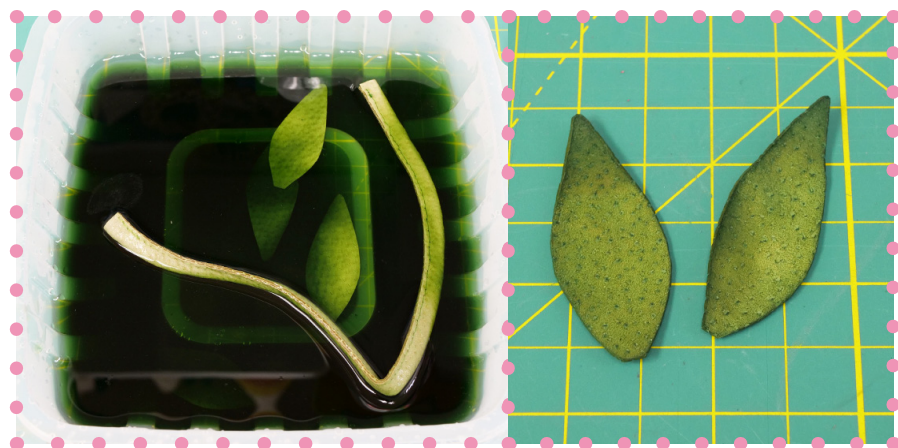


Step 1: Trace out Tulip pattern on Taupe Leather, using a pen or marker. Carefully cut out pieces inside the traced lines.

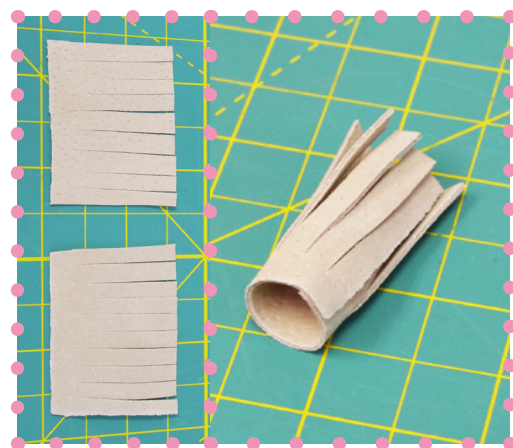
**Note: Tracing lines will be visible after dye process.*



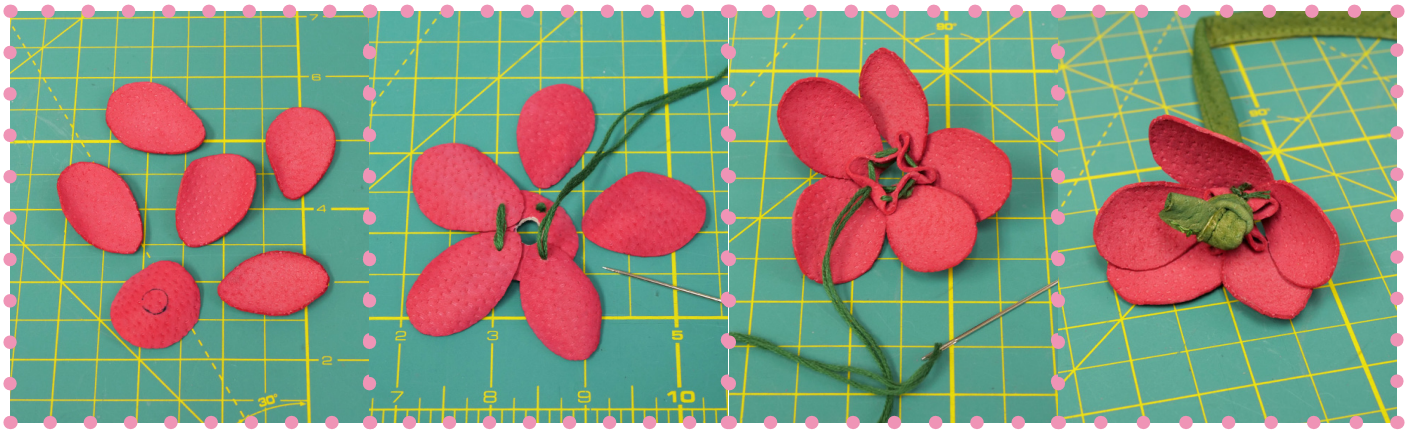
Step 2: Fold Stem in half and sew edges together 1/8" (3mm) away from the edge.



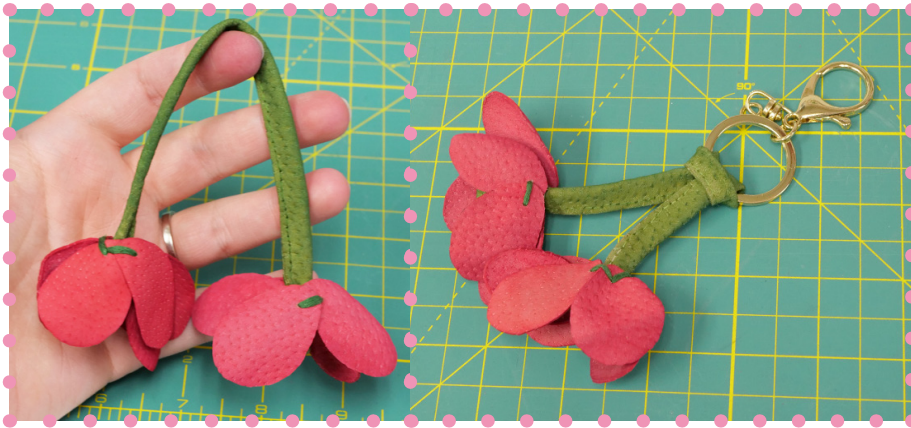
Step 3: Dye Stem and Leaves in Apple Green Dye. Let sit until the pieces have reached desired shade of green. Rinse in cold water and let dry. Repeat with Petal and Flower Base, using the dye colour of your choice.



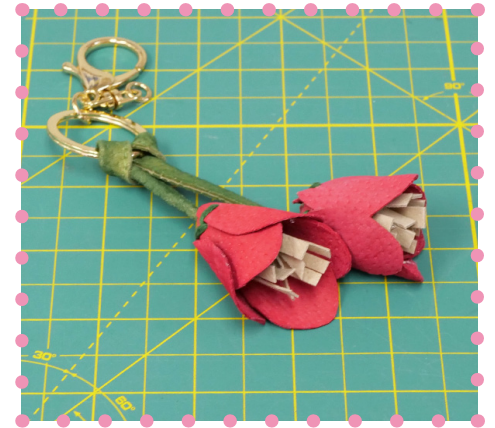
Step 4: Cut out Flower Stamen pieces and create a fringed look with scissors. Glue edges together with slight overlap.



Step 5: Cut out the hole in Flower Base. Tack down petals to base, using Green Embroidery Thread. After tacking all petals, slightly pull thread, from the inside of the flower, to 'gather' the base. This will close the flower and help the petals overlap. Stick the Stem through the hole and tie off the end. Repeat process for the second flower.



Step 6: Now that your flowers are attached to both ends of the Stem, tie to your Keychain Ring.



Step 7: Glue Stamen to inside of flowers and glue overlapping petals together.



Step 8: Attach your Leaves to the Stem with a bit of glue to finish off your tulip.



Tulip Keychain

