

Large Tote Bag DIY



Large Tote Bag DIY

What you need

- 20" x 40" (50cm x 100cm) of Canvas or Upholstery Fabric.
- 1" x 39" (2.5cm x 100cm) of Webbing
- Thread (Upholstery Thread optional)
- Sewing Machine
- Ruler
- Rotary Blade or Scissors
- Lighter (To burn edge of the webbing)
- Straight pins
- Universal 100/16 needle

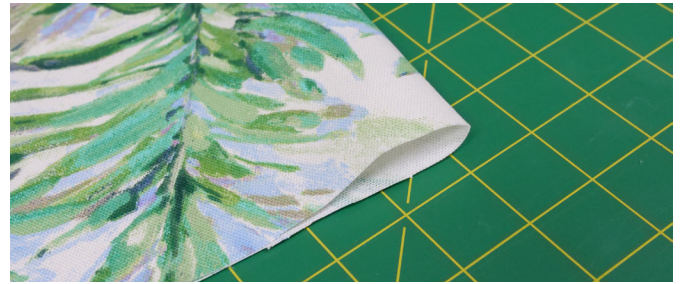
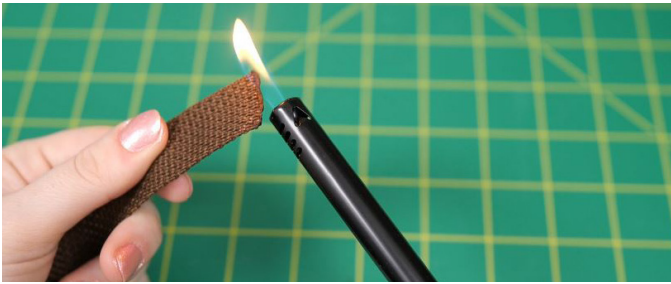
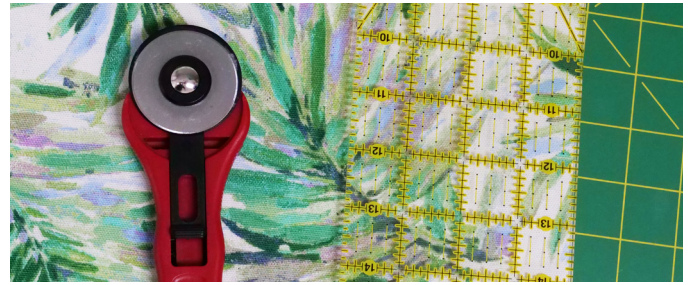
Fabric Recommendations

Pick out your favourite Fabricland canvas or upholstery fabric. This is a great upcycle project to use upholstery project remnants.

Tips before you start

- Press using a pressing cloth to prevent damaging your fabric. Test your iron settings on a scrap piece of fabric before you start your project.
- Use a scrap piece of fabric to practice sewing with on your sewing machine. Adjust the tension and thread length to what works best with your fabric. Try lowering the thread tension or trying a different needle if your fabric is puckering or stitches are skipping.
- Straps can be made longer by using a longer strip of webbing and the bag can be made smaller with smaller dimensions when cutting.

Instructions



Step 1: Cut 2 pieces of webbing to a length of 20" (50cm).

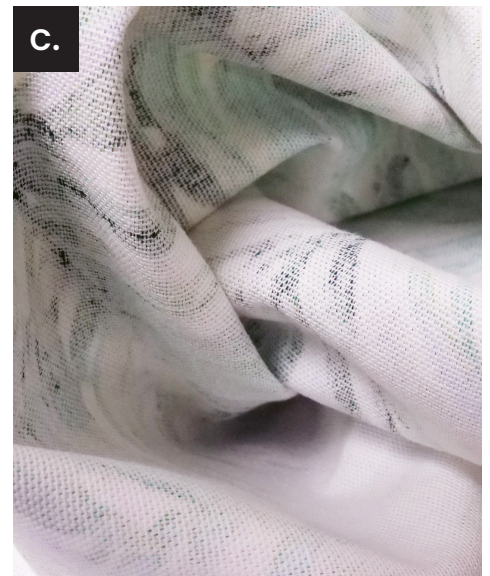
Use a lighter to burn the ends of the webbing, so there is no fraying.

Note: Polyester webbing will melt. Cotton webbing will burn.

Step 2: Cut out your fabric and fold it.

Cut a strip of the fabric with a rotary blade or scissors and ruler into 20" x 40" (50cm x 100cm).

Fold the length in half with wrong sides together.



Step 3: French Seams

a. Sew 5/8" (1.6cm) along the 2 open sides. Leave the top.

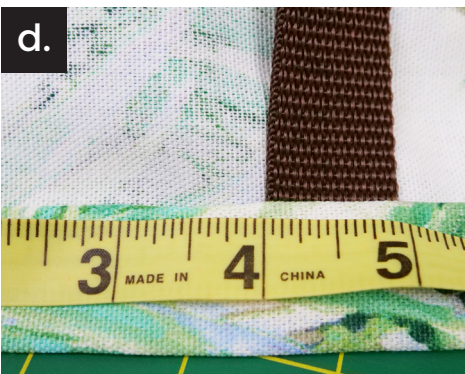
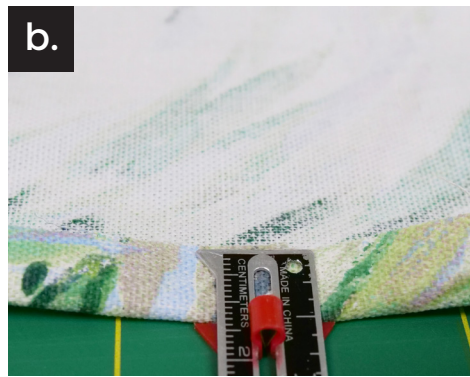
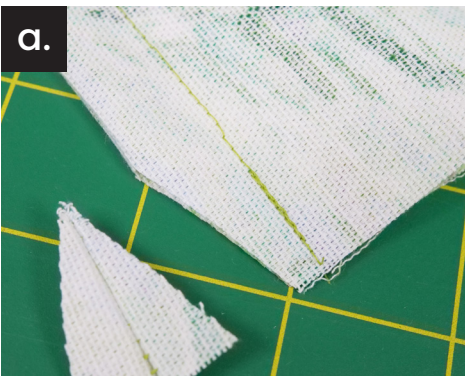
b. Trim seam allowance.

c. Turn inside out and push out corners.



Step 4 : Finish French Seams

Pin and sew $5/8$ " (1.6cm) to the two sides previously sewn.



Step 5 : Webbing and hem

- Cut a $.75$ " (2cm) tall triangle from the top side closest to the seam, to allow the fabric to fold with ease. Repeat step for both sides.
- Fold the edge of the top opening in $.5$ " (1.3cm).
- Fold the top opening in an additional 1" (2.5cm) and pin.
- Measure 4" (10cm) from each french seam and mark with a pin. Place the webbing into the 1" (2.5cm) folded over top where the pin is.
- Top stitch $3/4$ " (2cm) around the top edge of the bag.
- Fold the webbing to face the top of the bag and sew a H $.75$ " x W 1" (2cm x 2.5cm) rectangle with an X through it to secure. Turn inside out to see the completed look!



©Fabricland 2023.

Every effort has been made to ensure that all projects are error free. As we have no control over the execution of instructions no warranty can be given, nor results guaranteed. This pattern is not available for commercial resale. You cannot copy and sell this pattern. You may sell items you make with this pattern.